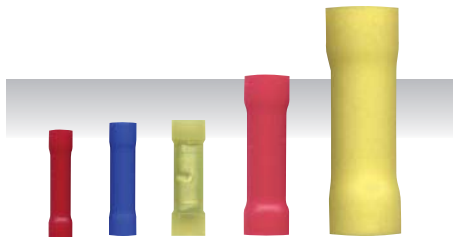


CRIMP CAPS



- CCL1614** 16-14ga Long Tip
- CCL1614-1000** 16-14ga Long Tip
- CC1210** 12-10ga



VINYL BARRELS

- RVBC** Red Vinyl (18-22ga)
- 3MRVBC** Red Vinyl (18-22ga)
- BVBC** Blue Vinyl (14-16ga)
- 3MBVBC** Blue Vinyl (14-16ga)
- YVBC** Yellow Vinyl (10-12ga)
- RVBC825** Red Vinyl (8ga)
- RVBC8** Red Vinyl (8ga)
- YVBC4** Yellow Vinyl (4ga)



NYLON BARRELS (CLEAR)

- RVBC** Red Nylon (18-22ga)
- 3MRNB** Red Nylon (18-22ga)
- BNBC** Blue Nylon (14-16ga)
- 3MBNB** Blue Nylon (14-16ga)
- YNBC** Yellow Nylon (10-12ga)
- 3MYNB** Yellow Nylon (10-12ga)



UNINSULATED BARRELS

- UBBC** 14ga-16ga
- UYBC** 10ga-12ga



FEMALE QUICK DISCONNECTS

Red 18-22ga Sold in 100pks

- RVFD110** Red Female .110
- RVFD250** Red Female .250
- RNFD250F** Red Insulated Female .250
- 3MRNFD250F** 3M Red Insulated Female

Blue 14-16ga Sold in 100pks

- BVFD110** Blue Female .110
- BVFD187** Blue Female .187
- BVFD205** Blue Female .205
- BVFD250** Blue Female .250
- BNFD250F** Blue Insulated Female .250
- 3MBNFD250F** 3M Blue Insulated Female

Yellow 10-12ga Sold in 100pks

- YVFD250** Yellow Female .250
- YNFD250F** Yellow Insulated Female .250
- 3MYNFD250F** 3M Yellow Insulated Female



MALE QUICK DISCONNECTS

Red 18-22ga Sold in 100pks

- RVMD250** Red Male .250
- RNMD250F** Red Insulated Male .250
- 3MRNMD250F** 3M Red Insulated Male .250

Blue 14-16ga Sold in 100pks

- BVMD250** Blue Male .250
- BNMD250F** Blue Insulated Male .250
- 3MBNMD250F** 3M Blue Insulated Male .250

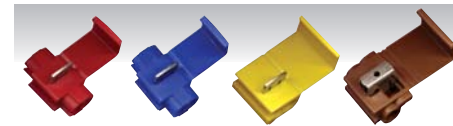
Yellow 10-12ga Sold in 100pks

- YVMD250** Yellow Male .250
- YNMD250F** Yellow Insulated Male .250
- 3MYNMD250F** 3M Yellow Insulated Male .250



T-TAPS

- BKTT** Black T-Tap (24-26ga)
- 3MRTT** Red T-Tap (18-22ga)
- 3MBTT** Blue T-Tap (14-16ga)
- 3MYTT** Yellow T-Tap (10-12ga)



3M SCOTCHLOKS®

- 3MRSL** Red Scotchlok (18-22ga)
- 3MBSL** Blue Scotchlok (14-16ga)
- 3MYSL** Yellow Scotchlok (10-12ga)
- 3MBRSL** Brown (10-12 to 14-16ga)



BULLET CONNECTORS

- RVFB** 18/22ga Female Bullets
- RVMB** 18/22ga Male Bullets
- BVFB** 16/14ga Female Bullets
- BVMB** 16/14ga Male Bullets



FORK TERMINALS

Red 18-22ga

- RVST6** Red #6 Fork
- RVST8** Red #8 Fork
- RVST10** Red #10 Fork
- RVST88** 8ga Red #8 Fork

Blue 14-16ga

- BVST6** Blue #6 Fork
- BVST8** Blue #8 Fork
- BVST10** Blue #10 Fork

Yellow 10-12ga

- YVST6** Yellow #6 Fork
- YVST8** Yellow #8 Fork
- YVST10** Yellow #10 Fork



RING TERMINALS

Red 18-22ga

- RVRT6** Red #6 Ring
- RVRT8** Red #8 Ring
- RVRT10** Red #10 Ring
- RVRT810** 8ga Red #10 Ring

Blue 14-16ga

- BVRT6** Blue #6 Ring
- BVRT8** Blue #8 Ring
- BVRT10** Blue #10 Ring
- BVRT14** Blue 1/4" Ring
- BVRT516** Blue 5/16" Ring
- BVRT38** Blue 3/8" Ring
- 3MBVRT38** 3M Blue 3/8" Ring

Blue 6ga

- BVRT614** Blue 6ga 1/4" Ring

Yellow 10-12ga

- 3MYVRT8** Yellow #8 Ring
- YVRT10** Yellow #10 Ring
- 3MYVRT12** Yellow #12 Ring
- YVRT14** Yellow 1/4" Ring
- YVRT516** 3M Yellow 5/16" Ring
- YVRT38** 3M Yellow 3/8" Ring



Red 8ga

- RVRT88** 8ga Red #8 Ring
- RVRT838** 8ga Red 3/8" Ring
- RVRT8516** 8ga Red 5/16" Ring

Yellow 4ga

- YVRT438** 4ga Yellow 3/8" Ring
- YVRT4516** 4ga Yellow 5/16" Ring



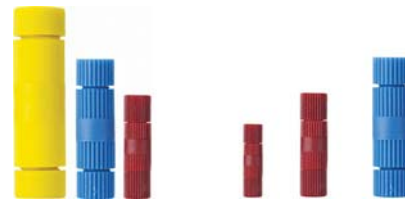
POSI-TIGHT CONNECTORS

- 616** 18-20ga Watertight Splice
- 617** 14-16ga Watertight Splice



POSI-TWIST CONNECTORS

- 608** 20-26ga Gray Posi-Twist
- 611** Posi-Twist Assortment



POSI-LOCK CONNECTORS

- 647** Butt Splice Assortment
- 646** Mini Butt 20-26ga
- 600** Posi Lock 18-24ga
- 601** Posi Lock 14-16ga



POSI-TAP CONNECTORS

- 604** 20-22ga Red
- 605** 14-16ga Blue



150 PIECE TERMINAL KIT W/TOOL

- IBK150** 150pc Terminal Kit

- Red Vinyl Rings - #6, #8, #10
- Blue Vinyl Rings - #6, #8, #10
- Yellow Vinyl Rings - #10
- Red Vinyl Spade - #6
- Blue Vinyl Spade - #6, #8
- Yellow Vinyl Spade - #10
- Red, Blue and Yellow Vinyl Butt Connectors
- Red Vinyl Female .250 QD
- Blue Vinyl Female .250 QD
- Red Vinyl Male .250 QD
- Blue Vinyl Male .250 QD



175 PIECE TERMINAL KIT

- IBK175** 175pc Terminal Kit

- Nylon Closed End Connectors
- Red, Blue and Yellow Vinyl Butt Connectors
- Red Vinyl Quick Disconnects - .110, .187
- Blue Vinyl Quick Disconnects - .187
- Yellow Vinyl Quick Disconnects - .250
- Blue Vinyl Bullets - .156
- Red Vinyl Piggyback Quick Disconnects - .250
- Red Vinyl Rings - #10, #516
- Red Vinyl Spades - #8, #10

175 PIECE TERMINAL KIT

- IBK175J** 175pc Terminal Kit

- Red, Blue and Yellow Vinyl Butt Connectors
- Red Vinyl Quick Disconnects - .250
- Blue Vinyl Quick Disconnects - .250
- Red Vinyl Rings - #10, #8, #6
- Blue Vinyl Rings - #10, #8, #6
- Yellow Vinyl Rings - #10, #14
- Red Vinyl Spades - #6, #8
- Blue Vinyl Spades - #8

300 PIECE TERMINAL KIT

- IBK300** 300pc Terminal Kit

- Red, Blue and Yellow Vinyl Butt Connectors
- Red Vinyl Quick Disconnects - .250
- Blue Vinyl Quick Disconnects - .250
- Red Vinyl Rings - #6, #8, #10
- Blue Vinyl Rings - #6, #8, #10
- Yellow Vinyl Rings - #10, #14
- Red Vinyl Spades - #6, #8
- Blue Vinyl Spades - #8

HEAT SHRINK CONNECTORS



HEAT SHRINK BARRELS

HSRBC	Red (18-22ga)
HSBBC	Blue (14-16ga)
HSYBC	Yellow (10-12ga)
HSRBC8	Red (8ga)



HEAT SHRINK BULLET CONNECTORS

HSBMB	16/14ga Male Bullets
HSBFB	16/14ga Female Bullets



HEAT SHRINK FORK TERMINALS

Blue 14-16ga	
HSBVLST6	Blue #6 Fork
HSBVST10	Blue #10 Fork



FEMALE QUICK DISCONNECTS

Red 18-22ga Sold in 100pks	
HSRFFI	Red Female .250

Blue 14-16ga Sold in 100pks	
HSBFFI	Blue Female .250

Yellow 10-12ga Sold in 100pks	
HSYFFI	Yellow Female .250

MALE QUICK DISCONNECTS

Red 18-22ga Sold in 100pks	
HSRMFI	Red Male .250

Blue 14-16ga Sold in 100pks	
HSBMFI	Blue Male .250

Yellow 10-12ga Sold in 100pks	
HSYMF1	Yellow Male .250



HEAT SHRINK RING TERMINALS

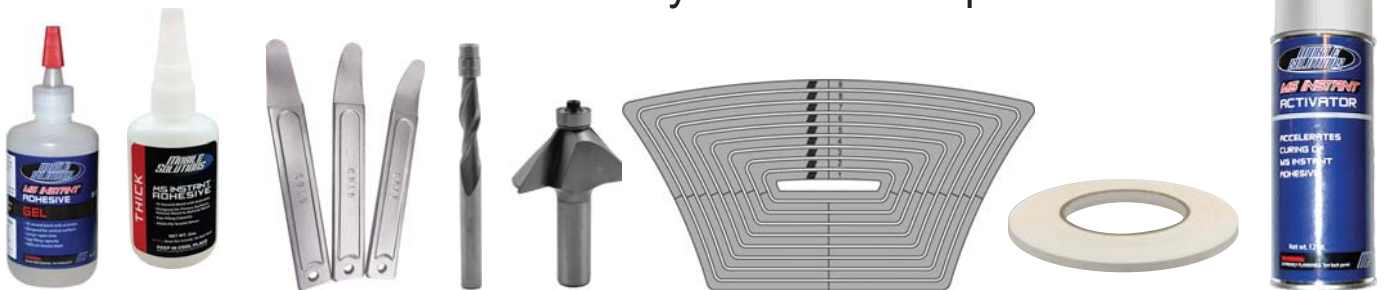
Red 18-22ga	
HSRRT14	Red 1/4" Ring
HSRRT516	Red 5/16" Ring

Blue 14-16ga	
HSBRT10	Blue #10 Ring
HSBRT14	Blue 1/4" Ring
HSBRT516	Blue 5/16" Ring

Yellow 10-12ga	
HSYRT10	Yellow #10 Ring
HSYRT140	Yellow 1/4" Ring
HSYRT516	Yellow 5/16" Ring
HSYRT38	Yellow 3/8" Ring

MOBILE SOLUTIONS

We stock a huge assortment of Mobile Solutions fabrication products.
Call us today for the latest price sheet!





UNINSULATED RINGS

- CUR1014** 1/0ga 1/4" Copper Rings
- CUR10516** 1/0ga 5/16" Copper Rings
- CUR1038** 1/0ga 3/8" Copper Rings
- CUR414** 4ga 1/4" Copper Rings
- CUR438** 4ga 3/8" Copper Rings
- CUR4516** 4ga 5/16" Copper Rings
- CUR838** 8ga 3/8" Copper Rings



NICKEL PLATED RINGS

Red & Black

- IB1GNRT50** 1/0ga 5/16" Rings
- IB4GNRT50** 4ga 5/16" Rings
- IB8GNRT50** 8ga 5/16" Rings



NICKEL PLATED FORKS

Red & Black 4ga

- US410** 4ga #10 Fork



NEED 2 PER CONNECTION

QUICK DISCONNECTS

- SB50** 8ga Quick Disconnect
- SB120** 4ga Quick Disconnect
- SB175** 1/0ga Quick Disconnect



18GA PRIMARY WIRE

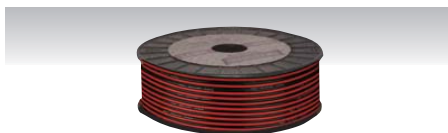
- PWBK18500** 18ga 500' Black
- PWBL18500** 18ga 500' Blue
- PWBR18500** 18ga 500' Brown
- PWGN18500** 18ga 500' Green
- PWGY18500** 18ga 500' Gray
- PWOR18500** 18ga 500' Orange
- PWPK18500** 18ga 500' Pink
- PWPL18500** 18ga 500' Purple
- PWRD18500** 18ga 500' Red
- PWWT18500** 18ga 500' White
- PWYL18500** 18ga 500' Yellow

16GA PRIMARY WIRE

- PWBK16500** 16ga 500' Black
- PWBL16500** 16ga 500' Blue
- PWOR16500** 16ga 500' Orange
- PWRD16500** 16ga 500' Red
- PWYL16500** 16ga 500' Yellow

14GA PRIMARY WIRE

- PWBK14500** 14ga 500' Black
- PWOR14500** 14ga 500' Orange
- PWRD14500** 14ga 500' Red



RED/BLACK PAIRED WIRE

- SWRB18500** 18ga 500' Red/Black
- SWRB16500** 16ga 500' Red/Black
- SWRB14500** 14ga 500' Red/Black
- SWRB12500** 12ga 500' Red/Black



SPEAKER WIRE W/LED WIRE

SWLED6250

16ga Speaker Wire
2pr 20ga LED Wire



9 CONDUCTOR QUICK CABLE - 18GA

- MC918-250** 9 Conductor 250'

AMP INSTALL KITS



AK4

4ga Value Amp Install Kit

- Designed for car audio systems up to 1000W
- 17ft 4ga Blue Power Wire
- 3ft 4ga Black Power Wire
- 17ft Right Angle RCA Cable w/Nickel Plated Ends
- 17ft 18ga Remote Turn On Wire
- 1 Mini ANL Fuseholder w/60A Fuse
- Ring Terminals and Hardware



AK8

8ga Value Amp Install Kit

- Designed for car audio systems up to 1000W
- 17ft 8ga Blue Power Wire
- 3ft 8ga Black Power Wire
- 17ft Right Angle RCA Cable w/Nickel Plated Ends
- 17ft 18ga Remote Turn On Wire
- 1 Mini ANL Fuseholder w/40A Fuse
- Ring Terminals and Hardware



FUSEHOLDERS

ATFH16C10	16ga ATC Capped Fuseholder
ATFH18MC10	18ga ATM Capped Fuseholder
ATFH16MC10	16ga ATM Capped Fuseholder
ATFH12C10	12ga ATC Capped Fuseholder
ATFH12MC10	12ga ATM Capped Fuseholder
ATFH10C10	10ga ATC Capped Fuseholder
ATFH8CB	8ga AGU Bakelite Fuseholder
MAXIFH	8ga MAXI Capped Fuseholder
ATFH3M10	16/14ga Crimp ATC Fuseholder



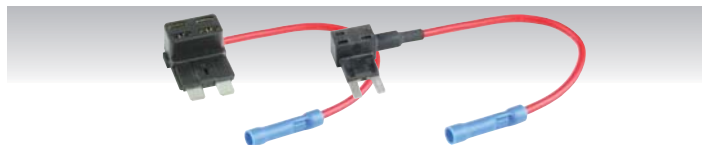
IBR81

Waterproof ATC or MANL fuseholder
Supports up to (2) 40 amp fuses
8ga wire inputs



FUSE TAPS

FTATC	ATC Fuse Taps
FTATM	ATM Fuse Taps



ATCDT	ATC Dual Add-A-Circuit
ATMDT	ATM Mini Dual Add-A-Circuit
ATMLPDT	ATM Mini Low Profile Dual Add-A-Circuit
ATRDT	ATR Dual Add-A-Circuit



BATTERY POST ADAPTERS

GM38	Short GM Post Adapter
BT305	Short GM Post Adapter
BT305L	Long GM Post Adapter

FUSES



AGC FUSES

AGC 1, 3, 5, 10, 15, 20, 25 & 30 Amp

AGU FUSES

AGU 10, 20, 30, 40, 50, 60, 70 & 80 Amp

CERAMIC FUSES

GBC 5, 8, 16 & 25 Amp

ATR MICRO 2 FUSES

ATR 5, 7.5, 10, 15, 20, 25 & 30 Amp

ATL MICRO 3 FUSES

ATL 5, 7.5, 10 & 15 Amp

ATM MINI FUSES

ATM 3, 5, 7.5, 10, 15, 20, 25, 30 & 40 Amp

ATM MINI LOW PROFILE FUSES

USATMLP 7.5, 10, 15, 20, 25, 30 Amp

ATC FUSES

ATC 3, 5, 7.5, 10, 15, 20, 25, 30 & 40 Amp

MAXI FUSES

MAX 20, 30, 40, 50, 60, 80 & 100 Amp

MINI ANL FUSES

MANL 15 Amp to 200 Amp

ANL FUSES

ANL 80, 100, 150, 200, 250, 300, 500 Amp

IBATCKIT

150 Assorted ATC fuses, 1 Fuse puller, 20 Brass fuse taps, Retail storage kit

IBATMLPKIT

150 Assorted ATMLP fuses, 1 Fuse puller, 20 Brass fuse taps, Retail storage kit



RELAYS & RELAY SOCKETS

RL3040 30/40A Relay

ERS123 Single Relay Socket

FUSEHOLDERS



4/8GA AGU FUSEHOLDER

FHAGU

4/8GA AGU Nickel Plated Fuseholder



4/8GA MINI ANL FUSEHOLDER

FHMANL

4/8GA Mini ANL Nickel Plated Fuseholder



4/8GA MINI ANL FUSEHOLDER

IBR51

4/8GA Mini ANL Nickel Plated Fuseholder



4/8GA ANL/MANL FUSEHOLDER

IBR52

4/8GA ANL/MANL Nickel Plated Fuseholder



ANL FUSEHOLDER

ANLFH10

ANL Nickel Plated Fuseholder - 10 Pack

RELAYS



IB80

80 Amp Relay



IB200

200 Amp Relay



IB500

500 Amp Relay

IP67 MARINE RATED CIRCUIT BREAKERS



CB50MR 50 Amp

CB80MR 80 Amp

CB100MR 100 Amp

CB135MR 135 Amp

CB150MR 150 Amp



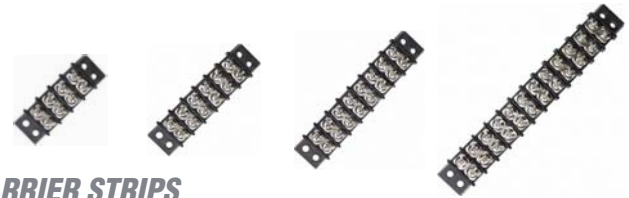
FUSE BLOCKS

BLMI304 4 Position ATM Fuse Block w/LED Indicators

BLMI310 10 Position ATM Fuse Block w/LED Indicators

BLRI506 6 Position ATC Fuse Block w/LED Indicators

BLRI310 10 Position ATC Fuse Block w/LED Indicators



BARRIER STRIPS

IBBS4P 4 Position #8 Barrier Strip

IBBS6P 6 Position #8 Barrier Strip

IBBS8P 8 Position #8 Barrier Strip

IBBS12P 12 Position #8 Barrier Strip



QUICK DISCONNECT

IBTH12 12ga 2-Pin Quick Disconnect



FLAT TRAILER WIRING PLUG

IBTH4P 4 Way Flat Trailer Wiring Plug



WATERPROOF CONNECTORS

IBWTH12 12ga Waterproof Connectors

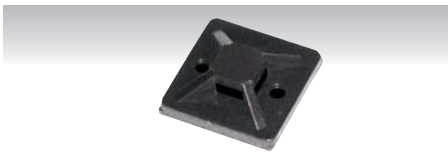
IBWTH16 16ga Waterproof Connectors

IBWTH18 18ga Waterproof Connectors



WIRE TIES

BCT4	4" Wire Tie
BCT6	6" Wire Tie
BCT8	8" Wire Tie
BCT8-1000	8" Wire Tie
BMCT7	7.5" w/Mounting Ring
BCT11	11" Wire Tie
BMCT11	11" w/Mounting Ring
BCT14	14" Wire Tie



WIRE TIE MOUNTS

CTM1	1" x 1" Adhesive Wire Tie Mount
-------------	---------------------------------



SPLIT LOOM

SLT18	1/8" Split Loom
SLT14	1/4" Split Loom
SLT145	1/4" Split Loom
SLT38	3/8" Split Loom
SLT12	1/2" Split Loom
SLT122	1/2" Split Loom
SLT58	5/8" Split Loom
SLT34	3/4" Split Loom
SLT1	1" Split Loom

CABLE CLAMPS

BCC14	1/4" Cable Clamp
BCC38	3/8" Cable Clamp
BCC12	1/2" Cable Clamp
BCC34	3/4" Cable Clamp



HEAT SHRINK - 4' LENGTHS

3MHST18	1/8" x 4' Heat Shrink
3MHST316	3/16" x 4' Heat Shrink
3MHST14	1/4" x 4' Heat Shrink
3MHST38	3/8" x 4' Heat Shrink
3MHST12	1/2" x 4' Heat Shrink
3MHST34	3/4" x 4' Heat Shrink
3MHST1	1" x 4' Heat Shrink

HEAT SHRINK - 100' ROLLS

3MHST181	1/8" x 100' Heat Shrink
3MHST3161	3/16" x 100' Heat Shrink
3MHST141	1/4" x 100' Heat Shrink
3MHST381	3/8" x 100' Heat Shrink
3MHST121	1/2" x 100' Heat Shrink

NELCO

cable tie products



ADHESIVE LINED 3:1 HEAT SHRINK

- Flexible Polyolefin with 3:1 shrink ratio
- Adhesive-Lined, forming a flexible bond
- Some sizes also available in CLEAR

NP-321-1/16	1/16" x 4' Heat Shrink
NP-321-1/8	1/8" x 4' Heat Shrink
NP-321-3/16	3/16" x 4' Heat Shrink
NP-321-1/4	1/4" x 4' Heat Shrink
NP-321-3/8	3/8" x 4' Heat Shrink
NP-321-1/2	1/2" x 4' Heat Shrink
NP-321-3/4	3/4" x 4' Heat Shrink
NP-321-1	1" x 4' Heat Shrink
NP-321-1.5	1-1/2" x 4' Heat Shrink



PROTECTO EXPANDABLE SLEEVING

- Perfect for automotive & marine use
- Suitable for new installations

PROTECTO 1/4-PE	1/4" x 100' Sleeve
PROTECTO 3/8-PE	3/8" x 100' Sleeve
PROTECTO 1/2-PE	1/2" x 100' Sleeve
PROTECTO 3/4-PE	3/4" x 100' Sleeve
PROTECTO 1-PE	1" x 100' Sleeve

PANDUIT CABLE TIES

- Dome-Top® Barb Ty Cable Ties
- Black Nylon w/Stainless Locking Barb

NBT-5-40-0-C	5" Length, 40lb
NBT-7-50-0-C	7" Length, 50lb
NBT-8-40-0-C	8" Length, 40lb



WRAP-IT SLEEVING

- Perfect for automotive & marine use
- 90° overlap easily wraps existing harnesses

WRAP-5	5mm Split Sleeve
WRAP-8	8mm Split Sleeve
WRAP-10	10mm Split Sleeve
WRAP-13	13mm Split Sleeve
WRAP-16	16mm Split Sleeve
WRAP-19	19mm Split Sleeve
WRAP-25	25mm Split Sleeve
WRAP-32	32mm Split Sleeve

NBT-11-40-0-C	11" Length, 40lb
NBT-14-50-0-C	14" Length, 50lb
NBT-14-120	14" Length, __lb



9V Speaker & RCA Cable Tester

IBR68



HW9013



IB1006



ATHMNGL



IB35260



HW9006

HW9007



IB18600



ATHKNGL



IB35350



IB28640



IB27450



TTT08



SPK4040



DC VOLTAGE STABILIZERS

IBVSTABL 8V-40V In / 2V 2A Out

IBVSTABL 8V-40V In / 2V 10A Out



AIR SAW BLADES

ASB10 10 Teeth Per Inch

ASB24 24 Teeth Per Inch

PANAVISE®



727-04
Panavise 4" Slimline Pedestal w/Knob Adjustment



727-06
Panavise 6" Slimline Pedestal w/Knob Adjustment



727-09
Panavise 9" Slimline Pedestal w/Knob Adjustment

727-12
Panavise 12" Slimline Pedestal w/Knob Adjustment



15575 PortaGrip Holder with T-Slot to AMPS Adapter Plate

15585 PortaGrip Holder with T-Button Tipper with Adjustment Wheel to AMPS Adapter Plate

- Rubberized indexed grippers and foam backed cradle won't scratch your device
- Quick release button for easy phone access
- Side arms adjust from 2.25" to 3.75" in width to fit nearly any phone
- Ratcheted feet allow for access to data ports

751072411 InDash Mount for Most 2004-2015 Ford Trucks & Various Ford Cars

75107510 InDash Mount for 2010-2015 Ford Taurus

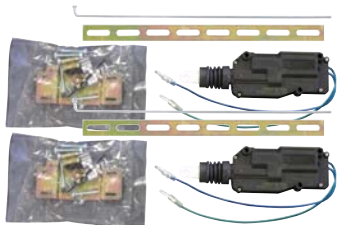
751101607 InDash Mount for Select 2007-2013 Chevrolet & GMC

751101707 InDash Mount for 2007-2014 Chevrolet Full Size Trucks (vents above radio)



DOOR LOCK MOTORS

DLA



DOOR LOCK MOTORS

DLACK2

Cable Style Actuator Kit (Hardware for 2 doors)



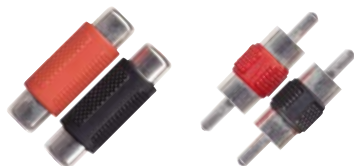
TRUNK RELEASE KITS

JW591



SLIDING DOOR SWITCH

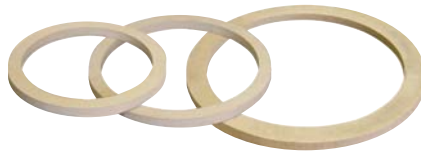
PS4-10 Sliding Door Switch



RCA BARREL CONNECTORS

RCA100BF10 Double Female

RCA100BM10 Double Male



SPEAKER RINGS

SR10

10" Speaker Ring - 9-1/16" id / 11" od - 3/4"

SR12

12" Speaker Ring - 11-1/8" id / 13" od - 3/4"

SR15

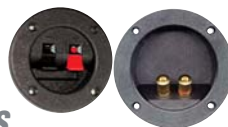
15" Speaker Ring - 14-1/16" id / 17-1/8" od - 5/8"



COOLING FANS

CF1 3.1" 12 Volt Cooling Fan

CF2 4.7" 12 Volt Cooling Fan



TERMINAL CUPS

TCRB Round w/Binding Posts

TCRS Round w/Spring Clips



6' 3.5MM TO 3.5MM CABLE

IB3.5MM



6' 3.5MM TO RCA CABLE

IB3.5RCA



BACKSTRAP

BS9 9" Backstrap

BS9HD 9" Heavy Duty Backstrap

BS18 18" Backstrap



MINI FLOCKER

FLKMINI

Mini Flocker

FLKBLK

Suede Flock and Adhesive



ABS SHEETS

89009031 1/8" ABS (12" x 12")

ABS316 3/16" ABS (12" x 12")

89009030 1/8" ABS Grid*

*Pre-Scored For Various Speaker Sizes



FOAM SPEAKER BAFFLES

VXT46 4 x 6"

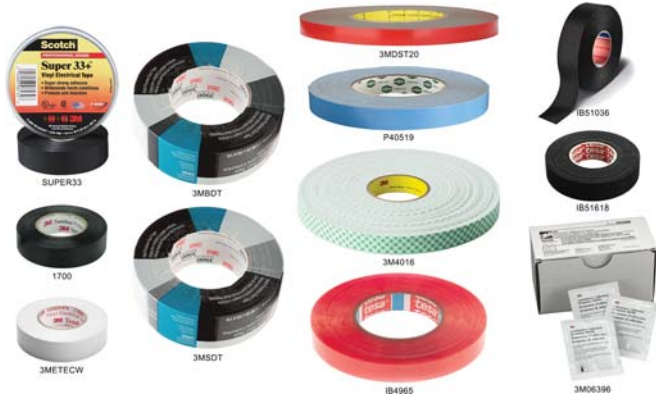
VXT55 5-1/4"

VXT60 6-1/2"

VXT57 5 x 7"

VXT68 6 x 8"

VXT69 6 x 9"



TAPES

1700	3M Temflex 1700 Tape - Black
3METECW	3M Temflex 1700 Tape - White
SUPER33	3M Super 33+ Vinyl Tape
3MBDT	3M Black Duct Tape - 2" x 60yd
3MSDT	3M Silver Duct Tape - 2" x 60yd
3MDST20	3M Double Sided Tape - 1/2" x 20yd
3M4016	3M Double Sided Foam Tape (1/16" x 1" x 36yd)
IB4965	Tesa Double Sided PET Tape - 1/2" x 60yd
P40519	Kent Double Stick Tape - 1/2" x 16yd
IB51036	Tesa OEM Exterior Harness Tape 3/4" x 27yd
IB51618	Tesa OEM Interior Cloth Tape 3/4" x 27yd
4173	Tesa 4173 PV2 Soft PVC Tape
51608	Tesa 51608 PET Fleece Noise Damping Tape
50535	Tesa 50535 Bodyguard Protection Tape
51136	Tesa 51136 PV2 Self Adhesive Polyethylene Tape
3M06396	Adhesion Promoter Applicator Packets



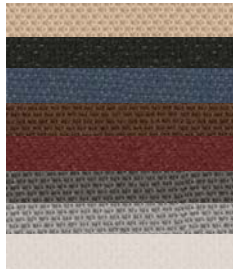
ADHESIVES & SOLDER

3MSTC	20yd 3M Strip Caulk
APSA	185 All Purpose Spray Adhesive
BV1	Black Velcro, 1" x 1yd
BV1RL	Black Velcro, 1" x 5yd
HMGS	Hot Glue Sticks - Black
HMGSC	Hot Glue Sticks - Clear
IC2000	Black Rubber Toughened CA Glue 2oz
INSTAC	Insta-Set 2oz Spray Accelerator for CA Glue
INSTAUN	Un-Cure 1oz CA Glue Dissolver/Remover
INSTGL2	Insta-Cure+ 2oz Cyanoacrylate Adhesive
INSTGL8	Insta-Cure+ 8oz Cyanoacrylate Adhesive
P50079	Kent S-46+ Silicone Spray Lubricant
SDR1	1lb .040 Rosen Core Solder
SDR14	1/4lb .062 Rosen Core Solder

GRILL CLOTH

54" x 36"

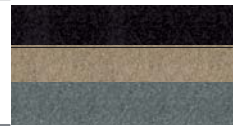
GCBEIGE	Beige
GCBLK	Black
GCBLU	Blue
GCBRN	Brown
GCBURG	Burgandy
GCCHAR	Charcoal
GCTGY	Light Grey
GCWHT	White



UNBACKED CARPET

40" Wide - Stain/Fade Resistant, Stretchable

AC3015	5yd Black
AC3375	5yd Med.Prairie Tan
AC3625	5yd Charcoal



UNBACKED TRUNK LINER

54" Wide - Stain/Fade Resistant, Stretchable

TL3015	5yd Black
TL3605	5yd Charcoal
TL3645	5yd Silver



WAFFLE GRILLS WITH HARDWARE

859010	10" Grill w/Hardware
859012	12" Grill w/Hardware
859015	15" Grill w/Hardware



SEAT HEATERS

SFHS1

Single Seat Heater w/Illuminated 3 Position Switch

- Newest Carbon Fiber Technology
- 18" x 9" Trimmable Heat Pads
- Electronic Auto Off Temperature Safety System
- High Setting: 120-125 Low Setting: 110-115
- Includes Wire Harness & Installation Hardware



IBHS2

Single Seat Heater w/Illuminated 5 Position Thumb Dial

- Newest Carbon Fiber Technology
- 18" x 9" Trimmable Heat Pads
- Electronic Auto Off Temperature Safety System
- High Setting: 120-125 Low Setting: 110-115
- Includes Wire Harness & Installation Hardware



IBHS3

Dual Seat Heaters w/Illuminated 5 Position Thumb Dial

- Newest Carbon Fiber Technology
- 18" x 9" Trimmable Heat Pads
- Electronic Auto Off Temperature Safety System
- High Setting: 120-125 Low Setting: 110-115
- Includes Wire Harness & Installation Hardware



IBHS1HA

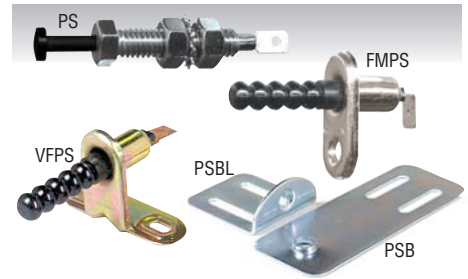
Replacement Harness For IBHS1

IBHS1SW

Replacement 3 Position Switch For IBHS1

IBHS1EXT

1M Extension Cable For IBHS1



PIN SWITCHES

FMPS Flange Mount Pin Switch

PS Universal Pin Switch

VFPS Vertical Flange Pin Switch

PSBL L-Shaped Bracket

PSB Straight Bracket

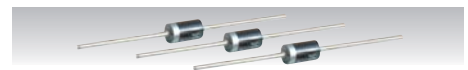


MERCURY SWITCHES

IBMS5 Mercury Switch

MAGNETIC REED SWITCHES

IBMS150 Magnetic Reed Switch



DIODES

D1 1 Amp Diodes

D3 3 Amp Diodes

D6 6 Amp Diodes

RESISTORS

IBVR 0-5K Adjustable Resistors

MR220 220 Ohm Resistors

MR560 560 Ohm Resistors

MR1K 1K Ohm Resistors

MR1-5K 1.5K Ohm Resistors

GM VATS BYPASS

GMVATS 10 Packs of 10 Values



100 AMP POWER SUPPLY

IBPS100

- 1440 Watts Max Output
- DC Output Voltage 13.6V / 14.4V
- Output Tolerance Voltage +/- .7%
- 13A Max AC Current @ 108 VAC
- Input Voltage 105-135 AC



MINI PIEZO SIREN

IBSIRENM

Mini Piezo Siren



TRANSMITTER BATTERIES

12VBAT 12 Volt 23A Batteries

12VBATGP27 12 Volt 27A Batteries

CR1620 3V CR1620 Batteries

CR2016 3V CR2016 Batteries

CR2025 3V CR2025 Batteries

CR2032 3V CR2032 Batteries

CR2450 3V CR2450 Batteries

STINGERS



PST61	1" Stinger
PST6114	1-1/4" Stinger
PST6112	1-1/2" Stinger
PST62	2" Stinger
PST83	3" Stinger

WAFFER HEAD TEKS



PWHT812	1/2" Wafer Head Tek
PWHT812Z	1/2" Wafer Head Zinc
PWHT834	3/4" Wafer Head Tek
PWHT81	1" Wafer Head Tek

WAFFER HEAD SCREWS



PWHS812	1/2" Wafer Head Stinger
PWHS834	3/4" Wafer Head Stinger
PWHS81	1" Wafer Head Stinger

PAN HEAD TEKS



PPHT812	1/2" Pan Head Tek
PPHT834	3/4" Pan Head Tek
PPHT81	1" Pan Head Tek

PAN HEAD SCREWS



PPH812	1/2" Pan Head
PPH834	3/4" Pan Head
PPH81	1" Pan Head
PPH8112	1-1/2" Pan Head
PPH82	2" Pan Head

HEX HEAD TEKS



HWHT812	1/2" Hex Head Tek
HWHT834	3/4" Hex Head Tek

TRUSS HEAD SCREWS



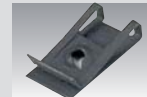
PTH812	1/2" #8 Truss Head
PTH1012	1/2" #10 Truss Head
PTH81	1" #8 Truss Head
PTH101	1" #10 Truss Head

OVAL HEAD SCREWS



POH812	1/2" Oval Head
POH834	3/4" Oval Head
POH81	1" Oval Head

SPEED CLIPS



SCL8	#8 Long Speed Clips
-------------	---------------------



CAMOUFLAGE SCREW CAPS

CSC	Black Screw Caps
------------	------------------



THREAD CUTTING BOLTS

PZGBOLT	5/16" Thread Cutting Bolts
----------------	----------------------------



WASHERS

IELW10	#10 Lock Washer
IELW10Z	#10 Lock Washer (Zinc)
TR8	#8 Beveled Trim Ring



GROMMETS

IBFG8	8ga IP68 Firewall Grommet
IBFG4	4ga IP68 Firewall Grommet
IBFG0	1/0ga IP68 Firewall Grommet
SB1	1ga Snap Grommet
SB4	4ga Snap Grommet
SB4US	4ga Snap Grommet
SB8	8ga Snap Grommet
SB10	10ga Snap Grommet
RG14	1/4" Rubber Grommet
RG516	5/16" Rubber Grommet
RG38	3/8" Rubber Grommet
RG12	1/2" Rubber Grommet



GRILL SNAPS

GSF	Female Grill Snap
GSM	Male Grill Snap



19MM IP67 RATED SWITCHES

3/4" / 19mm Hole
Includes Harness

- IBRBSA19** Black Latched Switch w/Harness - Red
- IBRBSB19** Black Latched Switch w/Harness - Blue
- IBRBSG19** Black Latched Switch w/Harness - Green
- IBRBSW19** Black Latched Switch w/Harness - White
- IBRBSY19** Black Latched Switch w/Harness - Yellow
- IBRSSR19** Stainless Latched Switch w/Harness - Red
- IBRSSB19** Stainless Latched Switch w/Harness - Blue
- IBRSSG19** Stainless Latched Switch w/Harness - Green
- IBRSSW19** Stainless Latched Switch w/Harness - White
- IBRSSY19** Stainless Latched Switch w/Harness - Yellow

- MIBRBSR19** Black Momentary Switch w/Harness - Red
- MIBRBSB19** Black Momentary Switch w/Harness - Blue
- MIBRBSG19** Black Momentary Switch w/Harness - Green
- MIBRBSW19** Black Momentary Switch w/Harness - White
- MIBRBSY19** Black Momentary Switch w/Harness - Yellow
- MIBRSSR19** Stainless Momentary Switch w/Harness - Red
- MIBRSSB19** Stainless Momentary Switch w/Harness - Blue
- MIBRSSW19** Stainless Momentary Switch w/Harness - White



TOGGLE SWITCHES

- IBMTS** Mini Toggle Switches
- IBRRS** Round Rocker Switches
On/Off
- IBRRLULD** Round Rocker Switches
Latched Up / Latched Down



- IBRRSB** Blue Illuminated Switches
- IBRRSG** Green Illuminated Switches
- IBRRSO** Orange Illuminated Switches
- IBRRSP** Purple Illuminated Switches
- IBRRSR** Red Illuminated Switches



PANEL SWITCHES

IBPS4 4 Switch Panel

IBPS6 4 Switch Panel

Pre-wired switch panel
Switch rating: 12V 20A, 24V 10A
Red LED indicators (optional)
Rubber panel plus waterproof rubber seals
Splash resistant
Overload protection design
Includes a sheet of adhesive switch labels

IBSS 2 Pin On/Off Switch

No LED Indicator
12/24V Usage
Protection for: Short, Overload, Polarity Reversal

IBSSL 3 Pin On/Off Switch

Red LED Indicator
12/24V Usage
Protection for: Short, Overload, Polarity Reversal

IBSSR 6 Pin "Stereo" Switch

Red LED Indicator
12/24V Usage
Protection for: Short, Overload, Polarity Reversal

IBSS6P 6 Pin "Winch" Switch

No LED Indicator
12/24V Usage
Protection for: Short, Overload, Polarity Reversal

IBSSWB 6 Pin "Winch" Switch

Blue LED Indicator
12/24V Usage
Protection for: Short, Overload, Polarity Reversal

IBSS2L 7 Pin "Winch" Switch

Dual Blue LED Indicators
12/24V Usage
Protection for: Short, Overload, Polarity Reversal



USB JACKS



IBR79

Marine 12V socket and dual USB chargers
5V 1A and 5V 2.1A USB jacks (charge only)
Weather resistant flush mount housing



IBR72

5V 2.1A water resistant USB charging socket
3.5MM AUX audio input & USB data transfer
Surface or flush mount w/5' cable



IBR78

5V 2.1A water resistant USB charging socket
USB data transfer
Surface or flush mount w/5' cable



IBR74

Dual USB pass-through extension
Water resistant cover
Surface or flush mount
1 meter cable



IBR73

HDMI / USB Pass Through Extension
Water resistant cover
Surface or flush mount
1 meter cable



IBR85

Flush mount dual USB charger (2x 2.1A)
Red illumination



IBR86

Flush mount dual USB charger (2x 2.1A)
White illumination



IBR87

Flush mount dual USB charger (2x 2.1A)
Blue illumination



IBR57

Dual USB charge port (2.1A + 1A)
Water resistant cover
Flush mount, 1-1/8" mounting hole
Optional panel mount - IBR59



IBR58

12V Power Socket
Water resistant cover
Flush mount, 1-1/8" mounting hole
Optional panel mount - IBR59



IBR59

Panel Mount for IBR57, IBR58



829600

1998-2013 Harley Davidson Speaker Adapters
Adapters for 6" - 6-1/2" speakers
One pair in each package



829601

1998-2013 Harley Davidson Speaker Adapters
Adapters for 6-1/2" - 6-3/4" speakers
One pair in each package



MPSAK82 2 Channel Amp Kit

Designed For Baggers
Quick-Disconnect For Easy Removal Of Amp
10' Long Speaker Wires & 2ch RCA
6' 8ga OFC Power & Ground Wire
Waterproof Fuse Holder w/(2) 30A Fuses



MPSAK84 4 Channel Amp Kit

Designed For Baggers
Quick-Disconnect For Easy Removal Of Amp
10' Long Speaker Wires & 2ch RCA
6' 8ga OFC Power & Ground Wire
Waterproof Fuse Holder w/(2) 30A Fuses