

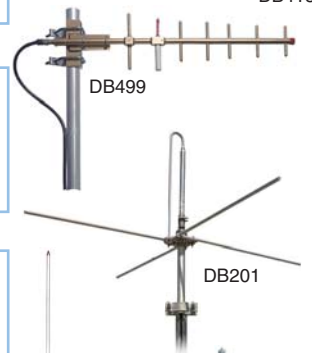
VHF EXPOSED DIPOLES

DB222-A150-158 MHz Exposed Dipole Omni, 5.1 dBi, 360° Horiz Beamwidth, N Male, 127"	Call For Price
DB222-B158-166 MHz Exposed Dipole Omni, 5.1 dBi, 360° Horiz Beamwidth, N Male, 127"	Call For Price
DB222-E143-150 MHz Exposed Dipole Omni, 5.1 dBi, 360° Horiz Beamwidth, N Male, 127"	Call For Price
DB224-A150-160 MHz Exposed Dipole Omni, 8.1 dBi, 360° Horiz Beamwidth, N Male, 255"	Call For Price
DB224-B155-165 MHz Exposed Dipole Omni, 8.1 dBi, 360° Horiz Beamwidth, N Male, 255"	Call For Price
DB224-E138-150 MHz Exposed Dipole Omni, 8.1 dBi, 360° Horiz Beamwidth, N Male, 270"	Call For Price
DB264-B155-165 MHz Exposed Dipole Omni, 8.1 dBi, 360° Horiz Beamwidth, N Male, 258"	Call For Price



UHF EXPOSED DIPOLES

DB404-B450-470 MHz Exposed Dipole Omni, 5.9 dBi, 360° Horiz Beamwidth, N Male, 60"	Call For Price
DB408-B450-470 MHz Exposed Dipole Omni, 8.7 dBi, 360° Horiz Beamwidth, N Male, 113"	Call For Price
DB420-B450-470 MHz Exposed Dipole Omni, 11.3 dBi, 360° Horiz Beamwidth, N Male, 233"	Call For Price
DB413-B450-470 MHz Exposed Dipole Quasi-Omni, 14.1 dBi, 360° Horiz Beamwidth, N Male, 220"	Call For Price



800 MHZ DIRECTIONAL YAGIS

DB499-A806-869 MHz Yagi, 12.1 dBi, 60° Horiz Beamwidth, N Female, 31" Length	Call For Price
DB499-C824-896 MHz Yagi, 12.1 dBi, 60° Horiz Beamwidth, N Female, 30.5" Length	Call For Price
DB499-K920-960 MHz Yagi, 12.1 dBi, 60° Horiz Beamwidth, N Female, 30" Length	Call For Price

GROUND PLANE ANTENNAS

DB201-L30-50 MHz Omni Antenna, 2.1 dBi, 360° Horiz Beamwidth, N Male, 114" L	Call For Price
DB201-M144-174 MHz Omni Antenna, 2.1 dBi, 360° Horiz Beamwidth, N Male, 30" L	Call For Price
DB201-P450-470 MHz Omni Antenna, 2.1 dBi, 360° Horiz Beamwidth, N Male, 19" L	Call For Price

OMNIDIRECTIONAL ANTENNAS

ASPA685151-158 MHz Omni Antenna, 7.4 dBi, 360° Horiz Beamwidth, N Male, 252" L	Call For Price
ASPB685155-163 MHz Omni Antenna, 7.4 dBi, 360° Horiz Beamwidth, N Male, 252" L	Call For Price
ASP705K450-470 MHz Omni Antenna, 12.1 dBi, 360° Horiz Beamwidth, N Female, 220" L	Call For Price
DB586-XT806-869 MHz Omni Antenna, 8.1 dBi, 360° Horiz Beamwidth, N Female, 59" L	Call For Price
DB586-Y890-960 MHz Omni Antenna, 8.1 dBi, 360° Horiz Beamwidth, N Female, 59" L	Call For Price
DB589-Y890-960 MHz Omni Antenna, 11.1 dBi, 360° Horiz Beamwidth, N Female, 110" L	Call For Price
DB806-XC824-896 MHz Omni Antenna, 11.1 dBi, 360° Horiz Beamwidth, N Female, 110" L	Call For Price
DB906SN-T2400-2483 MHz Omni Antenna, 8.1 dBi, 360° Horiz Beamwidth, N Female, 30" L	Call For Price



MOUNTING KITS & CLAMPS

ASP617	Universal Crossover Clamp for 2.9" OD Round Members	Call For Price
DB5001	VHF Side Mount Kit for 3" OD Round Members	Call For Price
DB5004	Adjustable Side Mount Kit for 3" OD Round Members	Call For Price
DB5007	UHF Side Mount Kit for 3" OD Round Members	Call For Price
DB5012	UHF Side Mount Kit for 3" OD Round Members	Call For Price
DB5098	Downtilt Mount Kit for 4.5" OD Round Members	Call For Price
DB365W	Wood/Masonry Wall (up to 14") Mount Kit for 2.8" OD Round Members	Call For Price
DB365-OS	Pipe Mount Kit for 1.25" - 3.5" OD Round Members with Welded Center Strap	Call For Price
DB365-SP5	Pipe Mount Kit for 5" OD Round Members with Welded Center Strap	Call For Price
DB370	Pipe Mount Kit for 1.25" - 3.5" OD Round Members - NO Welded Center Strap	Call For Price
DB375	Pipe Mount Kit for 3" OD Round Members	Call For Price

