

## BROADBAND RF WATTMETERS

The Telewave Model 44A/AP RF Wattmeter is used for direct measurement of forward and reflected RF power in a coaxial transmission line. Wide band capability and dynamic range allows operation without elements, inserts, or bandswitching.

- Requires no elements or slugs
- No band switching
- Measures 1 to 500 Watts in 5 power ranges
- 5 Watt full scale range
- Covers 20 - 1000 MHz
- Measures forward and reflected power
- Shock mounted meter in a rugged die cast housing
- Low temperature operation
- Quick Change Connectors (N Female standard)
- Light weight: 3lbs



**44A** *Broadband RF Wattmeter*

**44AP** *Broadband RF Wattmeter w/-40dB Sampling Port*

- 44AP adds -40dB RF Sampling Port for frequency measurement or signal injection

**TC44** *Leather Carrying Case For Telewave Meters*



## BASE STATION DUPLEXERS

- Minimum insertion loss and maximum TX to RX protection in the most severe RF environments
- Adjustable coupling optimizes the required attenuation for ideal RX performance
- All cavity inputs are electrically shorted to ground for maximum static and noise protection
- RG-214 Mil-Spec cable is used for long life, lowest insertion loss, and maximum power handling
- Heavy-duty silver-plated tuners and beryllium copper fingerstock contactors
- Tuning is simple and remains stable from -30°C to +70°C, thanks to the threaded Invar rod
- All duplexers are tuned and tested with customer-specified frequencies prior to shipping
- The positive locking mechanism allows for field tuning if frequency changes are required

**TPRD-4544** 400-470 MHz 4" 4 Cavity Duplexer w/5MHz Spacing

**TPRD1554** 144-1740 MHz 5" 4 Cavity Duplexer

**TPRD1556** 144-1740 MHz 5" 6 Cavity Duplexer

## Birds "Industry Standard" Wattmeter

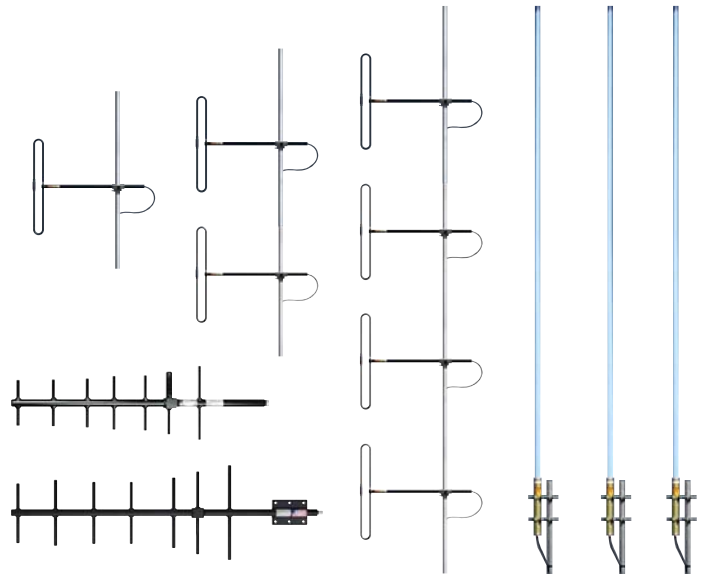
- Accurate CW measurement from 450 kHz to 2.7 GHz and 100 mW to 10 KW
- Rugged metal housing with gray powder coat finish
- Power Range: 100 mW to 10 kW using Bird® Plug-in Elements
- Frequency Range 450 kHz - 2.7 GHz (depending on element)
- 43N Accuracy: ± 5% of full scale
- Connectors: Quick Change Type (Female N normally supplied) Call for pricing



**43N** *General Purpose Wattmeter*

**ELEMENTS** Available In The Following Frequencies & Wattages **CALL FOR PRICING**

- 2-30 MHz • 25-60 MHz • 50-125 MHz • 100-250 MHz • 200-500 MHz • 400-1000 MHz
- 5 Watts • 10 Watts • 25 Watts • 50 Watts • 100 Watts • 250 Watts • 500 Watts • 1000 Watts



## DIPOLE AND DIPOLE ARRAYS

- The Telewave ANT150D series consists of single, dual, and 4-element dipole array antennas
- Precision phasing harness for optimum performance
- Wide bandwidth, high efficiency and field adjustable horizontal pattern
- Constructed with 6061-T6 aluminum, and welded at the base for maximum strength
- Sealed with our high-tech Txylan™ coating, which resists water and ice buildup, and provides exceptional protection from corrosive gases, UV radiation, salt spray, acid rain and windblown abrasives.
- The phasing harness is fully sealed by Telewave's Millenium Seal™ technology
- All components are at DC ground potential for lightning protection
- Includes a heavy-duty custom clamp set for mounting to a 1.5"-2.5" diameter pipe or tower leg
- N Male termination

**ANT150D** 138-174 MHz 1-2.6dBd Gain 36" Length

**ANT150D3** 138-174 MHz 3-6dBd Gain 89" Length

**ANT150D6-9** 138-174 MHz 6-9dBd Gain 195" Length

## FIBERGLASS COLLINEAR ANTENNAS

- Extremely rugged, designed for operation in all environmental conditions
- Constructed with brass and copper elements
- Connected at DC ground potential for lightning impulse protection
- All junctions are fully soldered to prevent RF intermodulation
- Completely protected within a high-tech, flexible radome to ensure survivability
- "Cool Blue" radome provides maximum protection from corrosive gases, UV radiation, icing, salt spray, acid rain, and wind blown abrasives
- Includes an ANTC482 dual clamp set for mounting to a 1.5" to 3.5" O.D. support pipe, and a 24" removable RG-213 N-Male jumper

**ANT150F6-5** 158-166 MHz 6dBd Gain 244" Length

**ANT450F6** 445-480 MHz 6dBd Gain 94" Length

**ANT450F10** 430-475 MHz 10dBd Gain 244" Length

## YAGI ANTENNAS

- High performance directional antenna
- Designed especially for point to point as well as point to multipoint applications
- 10 dBd forward gain with an excellent front-to-back ratio
- Solid aluminum elements with 360° welds prevent intermodulation and provide exceptional strength
- Completely protected with our high-tech Txylan™ coating, which provides icing resistance and environmental protection from corrosive gases, ultraviolet radiation, salt spray, acid rain and wind blown abrasives
- The feed line is protected within the boom, and the radiating element is completely sealed against ice and other hazards with a tough, RF-transparent radome
- Includes a welded vertical plate and mast clamp set (ANT450Y10WR - 1.5" - 3.5" O.D.) (ANT930Y10WR - 1.0" - 2.5")
- The "U" mount allows mounting to virtually all angled supports up to 3.5" O.D.

**ANT450Y10-WR** 450-470 MHz 10dBd Gain 44" Length

**ANT930Y10-WR** 885-975 MHz 10dBd Gain 28.5" Length