

Q BOMB ENCLOSURES

Sprayed with bedliner-type coating - providing superior impact resistance to withstand the roughest of conditions!

- Very good impact, abrasion and chemical resistance
- Excellent corrosion/deterioration resistance
- Reduces noise from vibration and impact
- Flexible and tenacious bond
- 3/4" MDF Construction
- Spring Loaded Terminal Cups



VENTED!



VENTED!



VENTED!



VENTED!



VENTED!



VENTED!



QBOMB10 VL SINGLE	Single 10" Vented X-Large SPL	1.40 ft ³ 11"h x 20"w x 14"d
QBOMB12 VL SINGLE	Single 12" Vented X-Large SPL	1.80 ft ³ 13.5"h x 22"w x 15"d
QBOMB15 VL SINGLE	Single 15" Vented X-Large SPL	3.85 ft ³ 32"h x 17"w x 17"d

QBOMB10 V	Dual 10" Vented	2.00 ft ³ 13" h x 28" w x 13" d
QBOMB12 V	Dual 12" Vented	2.20 ft ³ 13.5" h x 32" w x 14" d
QBOMB12 VL	Dual 12" Vented X-Large SPL	4.50 ft ³ 14.25" h x 36" w x 22.5" d
QBOMB15 VL	Dual 15" Vented X-Large SPL	7.30 ft ³ 16.25" h x 36" w x 26" d

QBOMB10 TB**	Dual 10" Vented	1.20 ft ³ 13.5" h x 22" w x 18.5" d
QBOMB12 TB	Dual 12" Vented	2.20 ft ³ 15.5" h x 26.5" w x 22" d

QBOMB10 HP SINGLE	Single 10" Horn Port	2.09 ft ³ 20" x 22.5" x 14"
QBOMB12 HP SINGLE	Single 12" Horn Port	2.09 ft ³ 20" x 22.5" x 14"

QB TRUCK 110V	Single 10" Vented	1.17 ft ³ 5" Mounting Depth
QB TRUCK 112V	Single 12" Vented	1.88 ft ³ 5" Mounting Depth

QB TRUCK 210V	Dual 10" Vented	1.17 ft ³ 5" Mounting Depth
QB TRUCK 212V	Dual 12" Vented	1.88 ft ³ 5" Mounting Depth

QBTW6X9	6 x 9" Boxes	8.25" h x 12" w x 5" td x 7" bd
----------------	---------------------	---------------------------------

Q BOMB ENCLOSURES



VENTED!

QBSHALLOW110V	Single 10" Side J-Port	.75 ft ³ 20.875" x 13.25" x 6.375" 5.125" M.D.
QBSHALLOW112V	Single 12" Side J-Port	1.1 ft ³ 23.75" x 15.75" x 9.25" 8" M.D.

QBSHALLOW10DF	Single 10"	.65 ft ³ 7.5" x 19.6" x 13.25" 3.5" M.D.
QBSHALLOW12DF	Single 12"	.65 ft ³ 7.5" x 19.6" x 13.25" 3.5" M.D.

Q BOMB VEHICLE SPECIFIC ENCLOSURES



GMC/Chevy Crew Cab 2014-2016	QBGMC10 2014 4DR	Dual 10"
GMC/Chevy Crew Cab 2014-2016	QBGMC12 2014 4DR	Dual 12"

Downfire 4" Mount Depth .63 ft³ Per Side



VENTED!

GMC/Chevy Crew Cab 2014-2016	QBGMC14 110 4DR**	Single 10"
GMC/Chevy Crew Cab 2014-2016	QBGMC14 210 4DR	Dual 10"

Ported, Upfire 5" Mounting Depth



GMC/Chevy Crew Cab 2007-2013	QBGMC12 2007 4DR	Dual 12"
-------------------------------------	-------------------------	-----------------

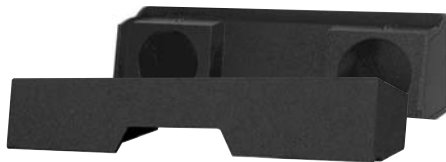
Does Not Fit HD Model. 5" Mount Depth .9 ft³ Per Side



VENTED!

GMC/Chevy Crew Cab 2007-2013	QBGMC 07 210	Dual 10"
-------------------------------------	---------------------	-----------------

5.5" Mount Depth



GMC/Chevy Extended Cab 1999-2006	QB GMC10 DF**	Dual 10"
GMC/Chevy Extended Cab 1999-2006	QB GMC12 DF	Dual 12"

*If the seat flips back, NOT forward.
5" Mount Depth .95 ft³ Per Side*



GM Colorado/Canyon Crew Cab 2015-2018	QB COLRDO CAN 10	Dual 10"
--	-------------------------	-----------------

5.5" Mount Depth

Q BOMB VEHICLE SPECIFIC ENCLOSURES



VENTED!

Ford F150 Super Crew 2009-2015	QB FORD 09 210	<i>Dual 10"</i>
Ford F250/350 Super Duty 2017-Current		
<i>6.25" Mount Depth 1.0 ft²</i>		



VENTED!

Ford Super Duty Crew F350 2000-2014	QB FORD09 F350 210	<i>Dual 10"</i>
<i>4.5" Mount Depth 1.4 ft² Per Side</i>		



Dodge Ram Quad Cab 2002+	QB DODGE10 4DR	<i>Dual 10"</i>
<i>QUAD CAB ONLY - NOT CREW OR MEGA CAB 6" Mount Depth .65ft² Per Side</i>		



VENTED!

Dodge Ram Quad Cab 2002+	QB DODGE QC 210	<i>Dual 10"</i>
Dodge Ram Quad Cab 2002+	QB DODGE QC 212	<i>Dual 12"</i>
<i>QUAD CAB ONLY - NOT CREW OR MEGA CAB 7.5" Mount Depth .9 ft² Per Side</i>		



VENTED!

Toyota Tundra Double Cab 2007+	QB TUNDRA 07 210	<i>Dual 10"</i>
--------------------------------	-------------------------	-----------------



VENTED!

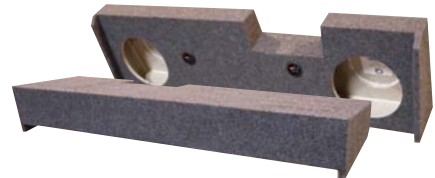
Toyota Tundra Crew Max 2014+	QB TUNDRA 14 210 CR	<i>Dual 10"</i>
------------------------------	----------------------------	-----------------



VENTED!

Universal SUV Enclosure	QB SUV 10 VENTED	<i>Dual 10"</i>
<i>1.25 ft² Per Side 42" x 14.75" x 14.5" 9" M.D.</i>		

VEHICLE SPECIFIC ENCLOSURES



GMC/Chevy Crew Cab 2014+ **GMC10 2014 4DR** **Dual 10"**

GMC/Chevy Crew Cab 2014+ **GMC12 2014 4DR** **Dual 12"**

4" Mount Depth .63 ft² Per Side



GMC/Chevy Double Cab 2014+ **GMC10 2014 DCAB** **Dual 10"**

GMC/Chevy Double Cab 2014+ **GMC12 2014 DCAB** **Dual 12"**

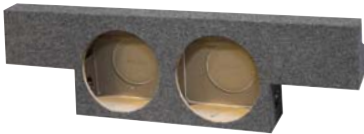
5" Mount Depth .55 ft² Per Side



GMC/Chevy Crew Cab 2007-2013 **GMC10 2007 4DR** **Dual 10"**

GMC/Chevy Crew Cab 2007-2013 **GMC12 2007 4DR** **Dual 12"**

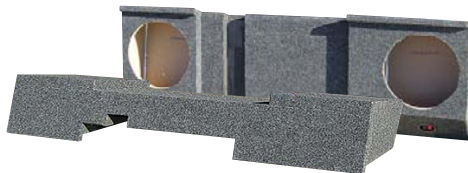
Does Not Fit HD Model. 5.5" Mount Depth .9 ft² Per Side



GMC/Chevy Crew Cab 2004-2006 **GMC10 2004** **Dual 10"**

GMC/Chevy Crew Cab 2004-2006 **GMC12 2004** **Dual 12"**

*If the seat folds forward. Does Not Fit HD Model.
5.5" Mount Depth .6 ft² Per Side*



GMC/Chevy Crew Cab 2004-2006 **GMC AVALANCHE 10** **Dual 10"**

*If the seat folds forward. **Also fits 2001-2013 Avalanche, but modifications are required. Does Not Fit HD Model.
4.5" Mount Depth .5 ft² Per Side*



GMC/Chevy HD Crew Cab 2001-2006 **GMC10 2001 HD** **Dual 10"**

*DOES Fit 2001-2006 1500HD/2500HD/3500HD Models.
5.25" Mount Depth .5 ft² Per Side*



GMC/Chevy Extended Cab 2007-2014 **GMC10 2007 HT** **Dual 10"**

GMC/Chevy HD Crew Cab 2007-2014

GMC/Chevy Extended Cab 2007-2014 **GMC12 2007 HT** **Dual 12"**

GMC/Chevy HD Crew Cab 2007-2014

*If the transmission hump is high.
5/5.5" Mount Depth .62/.88 ft² Per Side*



GMC/Chevy Extended Cab 1999-2006 **GMC10 DF** **Dual 10"**

GMC/Chevy Extended Cab 1999-2006 **GMC12 DF** **Dual 12"**

*If the seat flips back, NOT forward.
5.5" Mount Depth .6 ft² Per Side*

VEHICLE SPECIFIC ENCLOSURES



Ford Mustang Coupe 2005+

MUSTANG 12 2005

Dual 12"

9.5" Mount Depth 1.05 ft² Per Side

Dodge Ram Quad Cab 2002+

S DODGE10 4DR

Single 10"

Dodge Ram Quad Cab 2002+

S DODGE12 4DR

Single 12"

Dodge Ram Quad Cab 2002+

DODGE10 4DR

Dual 10"

Dodge Ram Quad Cab 2002+

DODGE12 4DR

Dual 12"

QUAD CAB ONLY - NOT CREW OR MEGA CAB 6" Mount Depth .6 ft² Per Side

Dodge Ram Extended Cab 1996-2001

DODGE 10

Dual 10"

4" Mount Depth .71 ft² Per Side

Toyota Tundra Crew Max 2014+

TUNDRA 10 2014 CREW

Dual 10"

3.75" Mount Depth .88 ft² Per Side

PYRAMID



AM/FM ANTENNAS

1305

18" AM/FM Rubber Antenna – Top mount ball base, 1 section, w/54" cable.

PYRAMID



IMPEDANCE ADAPTERS

NS60

Adjustable High Level to RCA Line Level Converter

PYRAMID



NOISE SUPPRESSORS

NS20

15 Amp RCA Noise Suppressor

PYRAMID



Regulated 12V Power Supplies

Perfect For Home, Shop, & Hobbyist, Screw Terminal Connectors, Electronic Overload Protection With Auto Reset, Short Circuit & Fuse Protection, Heavy Duty Cabinet & Heatsink With Anti-Skid Rubber Feet. PS9KX Features Cigarette Lighter Jack. PS26KX & PS36KX Feature Adjustable Voltage.

PS3KX 2.5A Constant / 3A Surge

PS7KX 5A Constant / 7A Surge

PS8KX 6A Constant / 8A Surge

PS9KX 5A Constant / 7A Surge

PS12KX 10A Constant / 12A Surge

PS14KX 12A Constant / 14A Surge

PS15KX 10A Constant / 12A Surge

PS21KX 18A Constant / 20A Surge

VEHICLE SPECIFIC ENCLOSURES



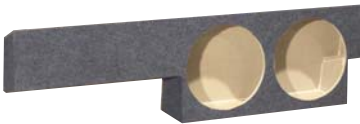
Colorado/Canyon Crew Cab 2004-2012 **COLRDO CAN CREW 10** *Dual 10"*
3.5" Mount Depth .66 ft² Per Side



Ford F150 Super Crew 2009-2019 **FORD10 2009 DF** *Dual 10"*
Ford F150 Super Crew 2009-2019 **FORD12 2009 DF** *Dual 12"*
5" Mount Depth .85 ft² Per Side



Ford F150 Super Crew & Ext. Cab 04-08 **FORD 10 2004** *Dual 10"*
Ford F150 Super Crew & Ext. Cab 04-08 **FORD 12 2004** *Dual 12"*
4.5" Mount Depth .7 ft² Per Side



Ford F150 Super Crew 2000-2003 **FORD10 SC NEW** *Dual 10"*
4.25" Mount Depth .6 ft² Per Side



Ford F150 Extended Cab 2000-2003 **FORD10 DF** *Dual 10"*
5" Mount Depth .7 ft² Per Side

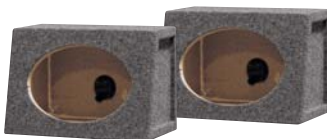


Ford Super Duty F250/350 2004-2016 **FORD10 SDUTY** *Dual 10"*
Fits Non and Power window models.
Requires removal of jack kit, rear seat belt cover and carpet.
Power window motor will need to be removed during install.
4.25" Mount Depth .65 ft² Per Side



Ford Super Duty F250/350 2001-2008 **FORD10 250 350** *Dual 10"*
4.5" Mount Depth .95 ft² Per Side

6 X 9 ENCLOSURES



TW6X9 **6 x 9" Boxes** 8.25"h x 12"w x 5"td x 7"bd

ECONOMY SUBWOOFER ENCLOSURES



SOLO12 **Single 12"** .88 ft³ 13"h x 13"w x 11.5"bd 5" Mounting Depth

VENTED ENCLOSURES 5/8" MDF Construction, Spring Loaded Terminals



SBASS10 VENTED	Single 10"	12"h x 16"w x 14.25"d
SBASS12 VENTED	Single 12"	13.25"h x 18"w x 16"d
SBASS15 VENTED	Single 15"	16.25"h x 21"w x 18"d

BASS10 VENTED	Dual 10"	12.25"h x 32"w x 14.5"d
BASS12 VENTED	Dual 12"	13.25"h x 36"w x 16.25"d
BASS15 VENTED	Dual 15"	16.25"h x 38"w x 18"d

HEAVY DUTY VENTED ENCLOSURES Heavy Duty 1" MDF Face, 3/4" MDF Sides, Gold Binding Posts, L Ports



HD110 VENTED	Single 10"	12"h x 16"w x 14.5"d
HD112 VENTED	Single 12"	13.25"h x 18"w x 16"d
HD115 VENTED	Single 15"	16.25"h x 21"w x 18"d

HD210 VENTED	Dual 10"	12"h x 32"w x 14.5"d
HD212 VENTED*	Dual 12"	13.25"h x 36"w x 16.25"d
HD212 VL	Dual 12"	14.25"h x 36"w x 22.5"d
HD215 VENTED*	Dual 15"	16.25"h x 38"w x 18"d

* SQUARE CUTOUT VERSIONS AVAILABLE - ADD "SQ" TO THE END OF THE PART NUMBER

SLANTED SEALED ENCLOSURES Heavy Duty 1" MDF Face, 3/4" MDF Sides, Gold Terminals



HDBASS12	Dual 12"	1.2 ft ³ Per Side 12"h x 28"w x 12.375"td x 17.125"bd
HDBASS15	Dual 15"	2.4 ft ³ Per Side 15"h x 34"w x 16"td x 21"bd

SEALED ENCLOSURES Heavy Duty 1" MDF Face, 3/4" MDF Sides, Gold Terminals



HD110	Single 10"	12"h x 16"w x 14.5"d
HD112	Single 12"	13.25"h x 18"w x 16"d

HD210	Dual 10"	12"h x 32"w x 14.5"d
HD212	Dual 12"	13.25"h x 36"w x 16.25"d

UNIVERSAL TRUCK ENCLOSURES



TW10S	Single 10"	.97 ft ³	15"h x 20"w x 5"td x 7.5"bd	5" M.D.
TW12S	Single 12"	.97 ft ³	15"h x 20"w x 5"td x 7.5"bd	5" M.D.
HD210 TRUCK	Dual 10"	1.15 ft ³ Per Side	13"h x 49.5"w x 5"td x 8"bd	5" M.D. 1" Front Panel
HD212 TRUCK	Dual 12"	1.15 ft ³ Per Side	13"h x 49.5"w x 5"td x 8"bd	5" M.D. 1" Front Panel