

PHANTOM SERIES ANTENNAS



THE PHANTOM™ ANTENNA SERIES

Phantom true field diversity design ensures uninterrupted video and data transmissions in urban canyons and rural drop off areas. 3dB MEG outperforms a 3dB whip in many applications.

VHF Models

TRAT1420 Call For Price
142-160 MHz - NMO Mt, Unity gain, Tuneable, White.

TRABT1420 Call For Price
142-160 MHz - NMO Mt, Unity gain, Tuneable, Black.

TRAT1500 Call For Price
150-168 MHz - NMO Mount, Unity Gain, Tuneable.

TRABT1500 Call For Price
150-168 MHz - NMO Mount, Unity Gain, Black, Tuneable.

TRABT1560 Call For Price
156-172 MHz - NMO Mount, Unity Gain, Black, Tuneable.

UHF Models

TRAB4303 Call For Price
430-450 MHz - NMO Mount, 3dB, Black.

TRA4500N Call For Price
450-470 MHz - NMO Mount, 3dB, No Ground Plane.

TRA4503 Call For Price
450-470 MHz - NMO Mount, 3dB.

TRAB4503 Call For Price
450-470 MHz - NMO Mount, 3dB, Black.

TRA4503P Call For Price
450-470 MHz - NMO Mount, 3dB, Permanent Mt.

800 MHz Models

TRA8063* Call For Price
806-866 MHz - NMO Mount, 3dB, Black.

TRA8213* Call For Price
821-896 MHz - NMO Mount, 3dB.

TRAB8213NP Call For Price
821-896 MHz - NMO Mount, 3dB, Black, NGP, Perm.

TRAB8903NP Call For Price
890-960 MHz - NMO Mount, 3dB, Black, NGP, Perm.

TRA9023 Call For Price
902-928 MHz - NMO Mount, 3dB.

TRA9023NP Call For Price
902-928 MHz - NMO Mount, 3dB, No Ground Plane.

TRA9023P Call For Price
902-928 MHz - NMO Mount, 3dB, Permanent Mt.

2.4 GHz Models

TRA24003* Call For Price
2400-2500 MHz - NMO Mount, 3dB.

TRA24003P Call For Price
2400-2500 MHz - NMO Mount, 3dB, Permanent Mt.

Dual Band Models

TRA821/18503* Call For Price
Dual Band Phantom Antenna - White, NMO Mt.

TRA821/18503P* Call For Price
Dual Band Phantom Antenna - White, Permanent Mt.

PHANTOM ELITE



PHANTOM™ ELITE SERIES

The exclusive low profile stealth antenna with Patented Field Diversity technology etched on a circuit board. VHF, UHF, Dual Band & 2.4GHz solutions

ETRA1440* Call For Price
144-148 MHz - NMO Mt, Unity Gain, White

ETRA1500* Call For Price
150-155 MHz - NMO Mt, Unity Gain, White

ETRA1550* Call For Price
155-160 MHz - NMO Mt, Unity Gain, White

ETRA4503* Call For Price
450-470 MHz - NMO Mt, 3dB, White

ETRA4703* Call For Price
470-490 MHz - NMO Mt, 3dB, White

ETRA8063* Call For Price
806-866 MHz - NMO Mt, 3dB, White

ETRA821/18503* Call For Price
821-896 / 1850-1990 MHz - NMO Mt, 3dB, White

ETRA24003* Call For Price
2.4-2.5 GHz MHz - NMO Mt, 3dB, White

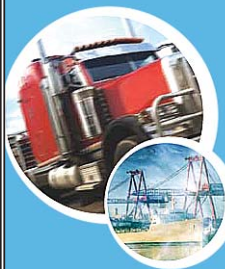
***Black Versions Available**

LAND MOBILE RADIO



The patented whip-less Phantom & Phantom Elite low profile antenna family has no equal with true field diversity performance. Traditional mobile coil antennas, quarterwaves, and A-base antennas also available.

GPS/TELEMATICS

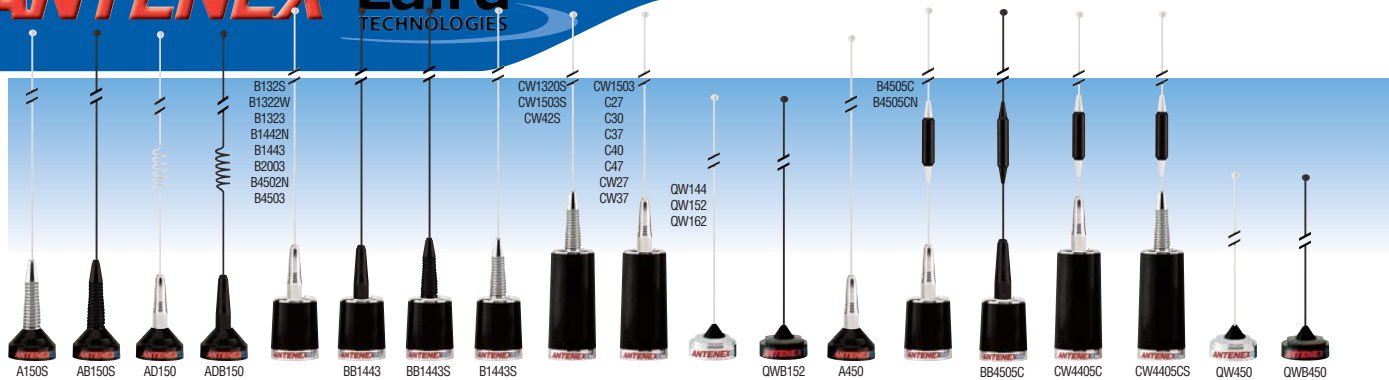


Low profile, high performance, cost effective solutions for your mobile communications needs. Available in cellular, GPS, and Satellite Radio frequencies.

INFRASTRUCTURE/IBW



An extensive array of base station and in building wireless antennas. Available in VHF, UHF, 700MHz, Cell/PCS and GSM/UMTS tri band variations.



VHF MOBILE

VHF A-Base Broadband Quarterwave

A150S **Call For Price**

150-174 MHz - NMO Mount, Unity gain, Spring.

AB150S **Call For Price**

150-174 MHz - NMO Mount, Unity gain, Spring.

AD150 **Call For Price**

150-174 MHz - NMO Mount, Unity gain, Cellular look.

ADB150 **Call For Price**

150-174 MHz - NMO Mount, Unity gain, Cellular look.

VHF Models

B132S **Call For Price**

132-525 MHz - NMO Mount, Tuneable 1/4wv

B1322W **Call For Price**

132-174 MHz - NMO Mount, 2.4dB, No ground plane

B1323 **Call For Price**

132-174 MHz - NMO Mount, 3dB.

B1442N **Call For Price**

144-174 MHz - NMO Mount, 2.4dB, No ground plane

B1442NS **Call For Price**

144-174 MHz - NMO Mount, 2.4dB, No ground plane

B1443 **Call For Price**

144-174 MHz - NMO Mount, 3dB.

BB1443 **Call For Price**

144-174 MHz - NMO Mount, 3dB, Black.

B1443S **Call For Price**

144-174 MHz - NMO Mount, 3dB, Spring.

BB1443S **Call For Price**

144-174 MHz - NMO Mount, 3dB, Black, Spring.

B2003 **Call For Price**

200-225 MHz - NMO Mount, 3dB.

Wideband VHF Models

CW1320S **Call For Price**

132-174 MHz - NMO Mount, 1/4wv, Spring

CW1503 **Call For Price**

150-162 MHz - NMO Mount, 3dB.

CW1503S **Call For Price**

150-162 MHz - NMO Mount, 3dB.

VHF Unity Gain Models

QW144 **Call For Price**

144-152 MHz - NMO mount, 1/4 wave.

QWB144 **Call For Price**

144-152 MHz - NMO mount, 1/4 wave, Black

QW152 **Call For Price**

150-162 MHz - NMO mount, 1/4 wave.

QWB152 **Call For Price**

152-162 MHz - NMO mount, 1/4 wave, Black.

QW162 **Call For Price**

162-174 MHz - NMO mount, 1/4 wave.

Lowband DC Ground Base Models

C27 27-31 MHz **Call For Price**

CB27 27-31 MHz **Call For Price**

C30 30-35 MHz **Call For Price**

C37 37-40 MHz **Call For Price**

C40 40-47 MHz **Call For Price**

C47 47-50 MHz **Call For Price**

NMO mount, 1/4 wave, Base load.

Wideband Lowband Models

CW27 27-30 MHz **Call For Price**

CW37 37-46 MHz **Call For Price**

CW42S 42-48 MHz **Call For Price**

NMO mount, 1/4 wave, Base loaded.

UHF MOBILE

UHF A-Base Broadband Quarterwave

A450 **Call For Price**

450-474 MHz - NMO Mount, Unity gain.

UHF Models

B4503* **Call For Price**

450-470 MHz - NMO Mount, 3dB.

B4505C* **Call For Price**

450-470 MHz - NMO Mount, 5dB, Closed coil.

B4505CS **Call For Price**

450-470 MHz - NMO Mount, 5dB, Closed coil w/Spring

B4502N **Call For Price**

450-470 MHz - NMO Mount, 2.4dB, No ground plane

B4505CN **Call For Price**

450-470 MHz - NMO Mount, 5dB, No ground plane

B4505CNS **Call For Price**

450-470 MHz - NMO Mount, 5dB, No ground plane with Spring.

BB4903 **Call For Price**

490-512 MHz - NMO Mount, 3dB.

***Black Versions Available**

Wideband UHF Models

CW4405C **Call For Price**

440-470 MHz - NMO Mount, 5dB

CW4405CS **Call For Price**

440-470 MHz - NMO Mount, 5dB, Spring

UHF Unity Gain Models

QW450* **Call For Price**

450-470 MHz - NMO Mount, 1/4wv.

***Black Versions Available**

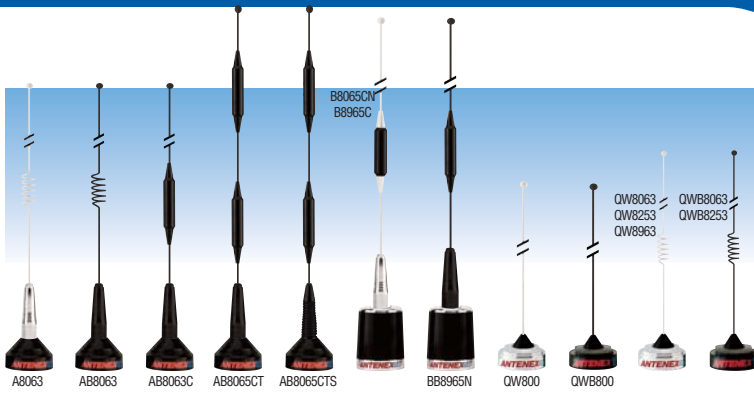
Elevated Feed Models

EB4500 **Call For Price**

450-512 MHz - NMO Mount, Unity Gain, Elevated Feed

EB4503C **Call For Price**

450-512 MHz - NMO Mount, 3dB Gain, Elevated Feed



800 MHz MOBILE

800MHz A-Base Antennas

A8063* Call For Price

806-896 MHz - NMO Mount, 3dB, Open coil.

A8063S* Call For Price

806-896 MHz - NMO Mount, 3dB, Open coil w/Spring

AB8063C Call For Price

806-896 MHz - NMO Mount, 3.5dB, Closed coil, Black

A8065CT* Call For Price

806-896 MHz - NMO Mount, 5dB, Closed trilinear coil

A8065CTS* Call For Price

806-896 MHz - NMO Mount, 5dB, Closed trilinear coil with Spring.

*Black Versions Available (AB ___)

700-900MHz Models

B7643 Call For Price

764-870 MHz - NMO Mount, 5dB, Open coil.

B8065C Call For Price

806-866 MHz - NMO Mount, 5dB, Closed Coil

B8065CN Call For Price

806-866 MHz - NMO Mount, 5dB, No ground plane

B8965C Call For Price

896-970 MHz - NMO Mount, 5dB

B8965CNS Call For Price

896-970 MHz - NMO Mount, 5dB, No ground plane with Spring.

BB8965N Call For Price

896-970 MHz - NMO Mount, 5dB, No ground plane

800MHz Unity Gain Quarterwave Models

QW800* Call For Price

806-896 MHz - NMO Mount, 1/4 wv.

*Black Versions Available

800MHZ 3dB Gain Models

QW8063* Call For Price

806-866 MHz - NMO Mount, 3dB, Open coil.

QW8253* Call For Price

825-896 MHz - NMO Mount, 3dB, Open coil.

QW8963 Call For Price

896-970 MHz - NMO Mount, 3dB, Open coil.

*Black Versions Available

Elevated Feed Models

EB8063 Call For Price

806-896 MHz - NMO Mount, 3dB Gain, Elevated Feed

EB8965C Call For Price

896-970 MHz - NMO Mount, 5dB Gain, Elevated Feed

MULTI BAND MOBILE

Dual Band Antennas

A150/450C* Call For Price

150-174/450-470 MHz - NMO Mt, 1/4wv, Closed Coil.

C144/440C* Call For Price

144-148/440-450 MHz - NMO Mt, 2/5dB, Closed Coil

C150/450C* Call For Price

150-174/450-470 MHz - NMO Mt, 2/5dB, Closed Coil

*Black Versions Available

All Band Antennas

ASCANC* Call For Price

150/450/800 MHz - NMO mount, Rx only, Closed coil.

QWFT120* Call For Price

118-970 MHz - NMO mount, 1/4 wave, Field Tunable.

*Black Versions Available

GPS / TELEMATICS

NMO Mount Models

GPSU15M

Call For Price

GPS 3v Bias - NMO Mount, 26dB



Dual Band GPS / Land Based AVL Models

GPSD4503P

Call For Price

450-470 Low Profile AVL w/Phantom - 3dB MEG*



Tri Band GPS AVL Models

GPST821/18503P

Call For Price

GPS / PCS / Cellular - 3dB MEG*



Trunk Mount Models

TM8GPS

Call For Price

Trunk Mount GPS w/NMO Mount -



GPS Add On Bracket

GPSNMOAO

Call For Price

GPS Antenna w/Bracket for NMO Mount -



Survivor Models

GPSDS1370P

Call For Price

VHF & GPS Survivor Series - Unity Gain

GPSDS4500P

Call For Price

UHF & GPS Survivor Series - Unity Gain

GPSDS8065P

Call For Price

800MHz & GPS Survivor Series - 5dB Gain



Internal Mercury Tri-Band Models

GPST5I824/18503

Call For Price

5v AMPS / PCS / GPS Internal Mercury - 3.5dBi

External Mercury Tri-Band Models

GPST3E824/18503

Call For Price

3v AMPS / PCS / GPS External Mercury - 3.5dBi

GPST5E824/18503

Call For Price

5v AMPS / PCS / GPS External Mercury - 3.5dBi



MOBILE MOUNTS

3/4" HOLE NMO MOUNTS



MBO	NMO Mount Only - No Cable or Connector - For Use With RG58	Call For Price
MB8	NMO Mount - 17' RG58A/U - No Connector	Call For Price
MBD	NMO Mount - 17' Teflex - No Connector	Call For Price
MB8Bi	NMO Mount - 17' RG58A/U - BNC Installed	Call For Price
MB8M	NMO Mount - 17' RG58A/U - Mini UHF Crimp Connector	Call For Price
MB8Mi	NMO Mount - 17' RG58A/U - Mini UHF Installed	Call For Price
MB8P	NMO Mount - 17' RG58A/U - PL259 Crimp Connector	Call For Price
MB8PS	NMO Mount - 17' RG58A/U - PL259 Solder Connector.....	Call For Price
MB8Pi	NMO Mount - 17' RG58A/U - PL259 Installed	Call For Price
MB8U	NMO Mount - 17' RG58U Solid Center - No Connector.....	Call For Price
MB8UP	NMO Mount - 17' RG58U Solid Center - PL259 Crimp Connector	Call For Price
MB8UMi	NMO Mount - 17' RG58U Solid Center - Mini UHF Installed	Call For Price

3/8" & 5/8" HOLE NMO MOUNTS

MAB8PS	3/8" Hole NMO Mount - 17' RG58A/U - PL259 Solder Connector.....	Call For Price
MAB8U	3/8" Hole NMO Mount - 17' RG58U Solid Center - No Connector.....	Call For Price
MABTO	3/8" Hole 1/4" Thick NMO Mount - No Cable - No Conn	Call For Price
MABT8	3/8" Hole 1/4" Thick NMO Mount - 17' RG58A/U - No Conn	Call For Price
MABT8M	3/8" Hole 1/4" Thick NMO Mount - 17' RG58A/U - Mini UHF Conn	Call For Price
MABT8P	3/8" Hole 1/4" Thick NMO Mount - 17' RG58A/U - PL259 Conn	Call For Price
MABT8U	3/8" Hole 1/4" Thick NMO Mount - 17' RG58U Solid Center - No Conn	Call For Price
MABVT8	3/8" Hole 1/2" Thick NMO Mount - 17' RG58A/U - No Conn	Call For Price
MABVT8U	3/8" Hole 1/2" Thick NMO Mount - 17' RG58U Solid - No Conn	Call For Price
MXGPO	3/8" Snap In Ground Plane Mount - No Cable - No Conn	Call For Price
VTM	5/8" Hole 1" Thick Plate Mount - No Cable - UHF Barrel Conn	Call For Price

NMO MAGNETIC MOUNTS



G8	Chrome Magnet Mt - 12' RG58A/U - No Connector	Call For Price
GB8	Black Magnet Mt - 12' RG58A/U - No Connector	Call For Price
GBR8	Black Magnet Mt - 12' RG58A/U - No Conn w/Rubber Boot	Call For Price
G8Pi	Chrome Magnet Mt - 12' RG58A/U - PL259 Installed	Call For Price
GB8Pi	Black Magnet Mt - 12' RG58A/U - PL259 Installed	Call For Price
GBR8Pi	Black Magnet Mt - 12' RG58A/U - PL259 Installed w/Rubber Boot	Call For Price
GBR8U	Black Magnet Mt - 12' RG58U Solid Center - No Connector.....	Call For Price
G8Bi	Chrome Magnet Mt - 12' RG58A/U - BNC Installed	Call For Price
GB8Bi	Black Magnet Mt - 12' RG58A/U - BNC Installed	Call For Price
G8Mi	Chrome Magnet Mt - 12' RG58A/U - Mini UHF Installed	Call For Price
GB8Mi	Black Magnet Mt - 12' RG58A/U - Mini UHF Installed	Call For Price
GM8	Chrome Mini Magnet Mt - 12' RG58A/U - No Connector	Call For Price
GMB8	Black Mini Magnet Mt - 12' RG58A/U - No Connector	Call For Price
GMB8Pi	Black Mini Magnet Mt - 12' RG58A/U - Mini PL-259 Installed	Call For Price

TRUNK LIP MOUNTS

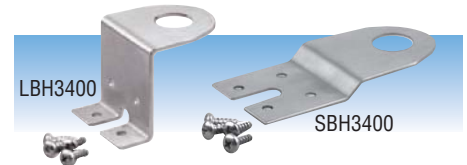


TM8	Chrome Mini Trunk Mt - 12' RG58A/U - No Connector	Call For Price
TMB8	Black Mini Trunk Mt - 12' RG58A/U - No Connector	Call For Price
TMB8PS	Black Mini Trunk Mt - 12' RG58A/U - PL259 Conn	Call For Price
TMB8U	Black Mini Trunk Mt - 12' RG58U Solid Center - No Connector	Call For Price



TRUNK GROOVE BRACKETS

LBT3400	Call For Price
<i>"L" Bracket - 3/4" hole, Stainless.</i>	
LBTB3400	Call For Price
<i>"L" Bracket - 3/4" hole, Black.</i>	
SBT3400	Call For Price
<i>Straight Bracket - 3/4" hole, Stainless.</i>	
SBTB3400	Call For Price
<i>Straight Bracket - 3/4" hole, Black.</i>	
LBTB8	Call For Price
<i>"L" Bracket - 3/4" hole, Black, 17' RG58A/U</i>	



LBH3400	Call For Price
<i>3/4" Heavy Duty L-Bracket -</i>	
SBH3400	Call For Price
<i>3/4" Heavy Duty Straight Bracket -</i>	



MIRROR MOUNT BRACKETS

LBM9034	Call For Price
<i>90° Mirror Mount - 3/4" Hole, Chrome.</i>	
LMB9034	Call For Price
<i>90° Mirror Mount - 3/4" Hole, Black.</i>	
LMBB8	Call For Price
<i>90° Mirror Mount - 3/4" Hole, Black, RG58A/U, No Conn</i>	
LMBB8PS	Call For Price
<i>90° Mirror Mount - 3/4" Hole, Black, RG58A/U, (PL259) solder-on.</i>	



L-BRACKET MOUNT

LBT8	Call For Price
<i>L-Bracket for NMO Antennas - Includes 17' of RG58A/U, No Connector</i>	
LBT8U	Call For Price
<i>L-Bracket for NMO Antennas - Includes 17' of RG58U Solid Center, No Connector</i>	

TUF DUCK ANTENNAS

Our rubber duck antennas are available in a variety of frequencies and connector options. When ordering, please specify connector type as shown on the chart.



EXL25	25-29 MHz	Photo# 2	Ea. \$CALL
<i>Connector Options - HT, KR, MX, BNX, TNX</i>			
EXB150	150-162 MHz	Photo# 5	Ea. \$CALL
<i>Connector Options - MX, BN, BNX, SF, SFU, SM, TN, TNX</i>			
EXS150	150-162 MHz	Photo# 9	Ea. \$CALL
<i>Connector Options - MX, BN, BNX, SF, SFU</i>			
EXC450	450-470 MHz	Photo# 12	Ea. \$CALL
<i>Connector Options - MD, MX, BN, BNX, SF, SFU, SM, TN</i>			
EXD450	450-470 MHz	Photo# 13	Ea. \$CALL
<i>Connector Options - MX, BN, SF, SFU, SM</i>			
EXR450	450-470 MHz	Photo# 14	Ea. \$CALL
<i>Connector Options - BN</i>			
EXC806	806-866 MHz	Photo# 17	Ea. \$CALL
<i>Connector Options - MD, SM</i>			
EXE806	806-866 MHz	Photo# 18	Ea. \$CALL
<i>Connector Options - BNX, TNX</i>			
EXP806	806-866 MHz	Photo# 19	Ea. \$CALL
<i>Connector Options - SF</i>			
EXC902	902-960 MHz	Photo# 17	Ea. \$CALL
<i>Connector Options - SF, SM</i>			
EXR902	902-960 MHz	Photo# 20	Ea. \$CALL
<i>Connector Options - TN</i>			

Call For Quantity Pricing

Call For Frequency & Connector Types Not Listed

S	Chrome Spring For "B" and "C" Coils.....	Call For Price
SB	Black Spring For "B" and "C" Coils.....	Call For Price
ASB	Black Spring For "A" Base Antennas.....	Call For Price
CCT	Heavy Duty Crimp Tool For RG58 & RG8X.....	Call For Price
CCT213	Heavy Duty Crimp Tool For RG213, RG214 & 9913.....	Call For Price
HS34	3/4" Hole Saw.....	Call For Price
HS34DB	Replacement Starter Bit for 3/4" Hole Saw.....	Call For Price
HS34RB	2-pk Replacement Saw Blades for 3/4" Hole Saw.....	Call For Price
IASFST	36' Roll MOCAP Self Fusing Silicone Tape.....	Call For Price
MOGSK	6-Pk Gaskets For NMO Mounts.....	Call For Price
MORNG	6-Pk O-Rings For NMO Mounts.....	Call For Price
BCORNG	6-Pk O-Rings For "B" and "C" Coils.....	Call For Price
P34	6-Pk Hole Plugs For 3/4" Hole.....	Call For Price
QWRC	Chrome Rain Cap For NMO Mounts.....	Call For Price
QWNUT	Chrome Nut For 1/4wv Antennas.....	Call For Price
NS1535	15 Amp Inline Noise Suppressor, 1-35 Volt.....	Call For Price
NS3035	30 Amp Inline Noise Suppressor, 1-35 Volt.....	Call For Price
MBC	Mobile to Base Converter for VHF/UHF w/SO239.....	Call For Price
MBCN	Mobile to Base Converter for VHF/UHF w/N Female.....	Call For Price
MBC800	Mobile to Base Converter for 800MHz w/N-Female.....	Call For Price
CBNC58	Crimp On BNC Male For RG58.....	Call For Price
CN58	Crimp On N Male For RG58.....	Call For Price
CSN58	Crimp On N Male For RG58 - Silver, ROHS Compliant.....	Call For Price
CSMA58	Crimp On SMA Male For RG58.....	Call For Price
MAGPLATE	Peel & Stick 3" Dia Metal Plate.....	Call For Price
MBNUT	Brass Lock Nut & O-Ring For MBO NMO Mounts.....	Call For Price





Radiator: precision brass elements sealed in white ultraviolet inhibited fiber-glass radome. Mounting sleeve: heavy wall epoxy coated aluminum, Termination: type N female connector, Wind survival: 100 mph, Power: 200W UHF & VHF models. **All base station antennas require a mounting bracket.**

FIBERGLASS OMNIDIRECTIONAL

VHF Omni Directional Models

FG1523	Call For Price
<i>152-156 MHz</i> - 3 dB, N Female connector.	
FG1443	Call For Price
<i>144-148 MHz</i> - 3 dB, N Female connector.	
FG1483	Call For Price
<i>148-152 MHz</i> - 3 dB, N Female connector.	
FG1520	Call For Price
<i>152-156 MHz</i> - Unity Gain, N Female connector.	
FG1560	Call For Price
<i>156-162 MHz</i> - Unity Gain, N Female connector.	
FG1563	Call For Price
<i>156-162 MHz</i> - 3 dB, N Female connector.	

UHF Omni Directional Models

FG4500	Call For Price
<i>450-470 MHz</i> - Unity gain, N Female connector.	
FG4503	Call For Price
<i>450-460 MHz</i> - 3 dB, N Female connector.	
FG4505	Call For Price
<i>450-460 MHz</i> - 5 dB, N Female connector.	
FG4505W	Call For Price
<i>450-470 MHz</i> - 5 dB, N Female connector.	
FG4507	Call For Price
<i>450-460 MHz</i> - 7 dB, N Female connector.	
FG4603	Call For Price
<i>460-470 MHz</i> - 3 dB, N Female connector.	
FG4605	Call For Price
<i>460-470 MHz</i> - 5 dB, N Female connector.	
FG4607	Call For Price
<i>460-470 MHz</i> - 7 dB, N Female connector.	

BASE ANTENNA MOUNTS



800/900 MHz Omni Directional Models

FG8063	Call For Price
<i>806-866 MHz</i> - 3dB, N Female connector.	

FG8246	Call For Price
<i>824-896 MHz</i> - 6dB, N Female connector.	

FG8960	Call For Price
<i>896-940 MHz</i> - Unity Gain, N Female connector.	

FG8966	Call For Price
<i>896-940 MHz</i> - 6dB, N Female connector.	

FG9023	Call For Price
<i>902-928 MHz</i> - 3dB, N Female connector.	

FG9026	Call For Price
<i>902-928 MHz</i> - 6dB, N Female connector.	

FG9283	Call For Price
<i>928-970 MHz</i> - 3dB, N Female connector.	

FG9286	Call For Price
<i>928-970 MHz</i> - 6dB, N Female connector.	

2.4 GHz Omni Directional Models

FG24005	Call For Price
<i>2.4-2.5 GHz</i> - 5dBi, N Female connector.	

FG24008	Call For Price
<i>2.4-2.5 GHz</i> - 8dBi, N Female connector.	

Dual Band Omni Directional Models

FG821/18503	Call For Price
<i>824-896 / 1850-1990MHz</i> - 0/6dB, N Female conn.	



Field tunable for quick field deployment, Match encased in a dry synthetic rubber material which virtually eliminates detuning from moisture & vibration. UV inhibiting insulators will not crack or decay with UV exposure. **All base station antennas require a mounting bracket.**

ALUMINUM OMNIDIRECTIONAL VHF Voyager Omni Directional Models

VG1502	Call For Price
<i>150-174 MHz</i> - 2dBi, Field Tunable	

VG1506	Call For Price
<i>150-174 MHz</i> - 6dBi, Field Tunable	

UHF Voyager Omni Directional Models

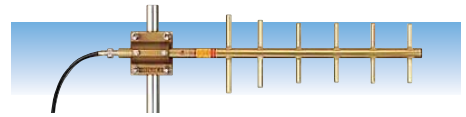
VG4506	Call For Price
<i>450-512 MHz</i> - 6dBi, Field Tunable	

FM1	Call For Price
<i>Stainless U-Bolt Mount for FG Series</i>	

FM2	Call For Price
<i>Heavy Duty Aluminum Mount for FG Series</i>	

FM3	Call For Price
<i>Heavy Duty Aluminum Mount for (2) 3" Dia.</i>	

FM3W	Call For Price
<i>HD Aluminum Mount for (2) 3" Dia. w/Center Weld</i>	



DIRECTIONAL YAGI ANTENNAS

360° fully welded gold anodized models. Internal matching design will not ice up, detune, or corrode.

VHF Models

Y1503	Call For Price
<i>150-174 MHz</i> - 7.1 dBd, 3 element.	

Y1505	Call For Price
<i>150-174 MHz</i> - 9.2 dBd, 5 element.	

UHF Models

Y4066	Call For Price
<i>406-430 MHz</i> - 10.2 dBd, 6 element.	

Y4503	Call For Price
<i>450-470 MHz</i> - 7.1 dBd, 3 element.	

Y4505	Call For Price
<i>450-470 MHz</i> - 9.2 dBd, 5 element.	

Y4506	Call For Price
<i>450-470 MHz</i> - 10.2 dBd, 6 element.	

800MHz/2.4GHz Models

Y8063	Call For Price
<i>806-866 MHz</i> - 6 dBd, 3 element.	

Y8066	Call For Price
<i>806-866 MHz</i> - 9 dBd, 6 element.	

Y80612	Call For Price
<i>806-896 MHz</i> - 11 dBd, 12 element.	

Y8963	Call For Price
<i>896-940 MHz</i> - 6 dBd, 3 element.	

Y8966	Call For Price
<i>896-970 MHz</i> - 9 dBd, 6 element.	

Y89612	Call For Price
<i>896-970 MHz</i> - 11 dBd, 12 element.	

Y89618	Call For Price
<i>896-970 MHz</i> - 14 dBd, 18 element.	



ENCLOSED YAGI ANTENNAS

2.4 GHz is completely sealed and strong enough for outdoor use. 15dBi high gain moves your lower powerISM or WLAN signal from with minimal signal loss.

2.4 GHz Models

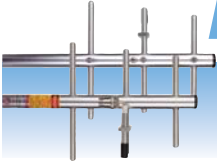
YE240015	Call For Price
<i>2.4-2.5 GHz</i> - 15 dBi	

5.8 GHz Models

YE490012	Call For Price
<i>4.9-5.8 GHz</i> - 14.5 dBi	

YE525012	Call For Price
<i>5.25-5.35 GHz</i> - 14.5 dBi	

INFRASTRUCTURE / IBW



SILVER SERIES YAGI ANTENNAS

Broad bandwidth allows gain performance to be more consistent throughout the frequency range.

VHF Models

YS1503 Call For Price

150-174 MHz - 3 Element, 7.1 dBd

YS1505 Call For Price

150-174 MHz - 5 Element, 9.2 dBd

UHF Models

YS4503 Call For Price

450-470 MHz - 3 Element, 7.1 dBd

YS4505 Call For Price

450-470 MHz - 5 Element, 9.2 dBd

YS4506 Call For Price

450-470 MHz - 6 Element, 10.2 dBd

800 MHz Models

YS8063 Call For Price

806-896 MHz - 3 Element, 6 dBd

YS8066 Call For Price

806-896 MHz - 6 Element, 9 dBd

YS8963 Call For Price

896-970 MHz - 3 Element, 6 dBd

YS8966 Call For Price

896-970 MHz - 6 Element, 9 dBd

Mounting Kit

YM78HD Call For Price

HD Yagi Mounting Kit For Yagis with 7/8" Boom

DIPOLE ARRAY ANTENNAS

Custom pattern performance. N female connector.

VHF Models

YDA1502 Call For Price

150-174 MHz - 3 dBd

YDA1504 Call For Price

150-174 MHz - 6 dBd

UHF Models

YDA4502 Call For Price

450-470 MHz - 3 dBd

YDA4504 Call For Price

450-470 MHz - 6 dBd

Masts

YMST8 Call For Price

8' X 1-1/4" OD Aluminum Mast -

YMST18 Call For Price

18' X 1-1/4" OD Aluminum Mast - (2 - 9' pcs)

INFRASTRUCTURE/IBW



An extensive array of base station and in building wireless antennas. Available in VHF, UHF, 700MHz, Cell/PCS and GSM/UMTS tri band variations.

MEGASPHERE

Cylindrical form factor, High gain omnidirectional, Mounts to suspended ceiling grid or clams to I-beam.



2.4GHz Megasphere Indoor Models

IG2450NF36 Call For Price

2.4-2.5 GHz - 6 dBi, N-Female

IG2450RT36 Call For Price

2.4-2.5 GHz - 6 dBi, RP TNC

2.4GHz Megasphere Indoor/Outdoor

IG02450NF12 Call For Price

2.4-2.5 GHz - 5 dBi, N-Female

IG02450RT12 Call For Price

2.4-2.5 GHz - 5 dBi, RP TNC

MICROSPHERE

Omnidirectional pattern provides in-building coverage. Toroidal field pattern provides omnidirectional coverage in any plane around the long axis, and 2 lobes in any plane parallel to the long axis.



Microsphere Indoor Models

IF850SF00 Call For Price

806-960 MHz - 3 dBi, SMA Female

IF2450SF00 Call For Price

2.4 GHz - 3 dBi, SMA Female

IFMULTINF00 Call For Price

AMPS / GSM / DCS / PCS / UMTS - 3 dBi, N Female

IFD2450RT36 Call For Price

2.4-2.5GHz MicroSphere Diversity - 3 dBi, RP BNC

SPHERE

Omnidirectional pattern provides in-building coverage. Quick installation with a standard ceiling tile frame metal clip. Considerable gain over traditional dipoles.



2.4GHz Sphere Indoor Models

IO2450-NF12 Call For Price

2.4-2.5 GHz Sphere - 3 dBi, N Female

IO2450-RN12 Call For Price

2.4-2.5 GHz Sphere - 3 dBi, RP N Female

WHISPER

Directional pattern provides targeted coverage to a specific area. Self contained.



2.4GHz Whisper Indoor Models

ID2450-RN12 Call For Price

2.4-2.5 GHz Indoor Whisper - 9 dBi, RP N Female

ID2450-RT36 Call For Price

2.4-2.5 GHz Indoor Whisper - 9 dBi, RP TNC Female



TERRACE

Bi-directional pattern provides optimal corridor & hallway coverage. Supplied w/standard wall mount kit.

Terrace Diversity Models

ID02450-RT07E Call For Price

2.4-2.5 GHz Outdoor Diversity - 5 dBi, RP TNC Female

IDD5250-RT36 Call For Price

4.9-6.0 GHz Terrace Diversity - 5 dBi, RP TNC Female

MOUNTING HARDWARE

IMI-02B Call For Price

2" Indoor Pan/Tilt Mount - For indoor Whisper

IMI-02D Call For Price

2" Indoor Pan/Tilt Mount - For Terrace diversity

IMI-05B Call For Price

5" Indoor Pan/Tilt Mount - For indoor Whisper

IMO-05A Call For Price

5" Outdoor Pan/Tilt Mount - For Terrace diversity



PNL240012



PNL240018

WLAN DIRECTIONAL PANELS

Compatible With Most Enterprise Class Access Points. They Deliver Focused Coverage In A Specific Direction Delivering Greater Distance And Increased Flexibility For Your Wireless Local Area Network. Features Include: Weatherproof Materials, Easy Mount Bracket, N-Female Connector.

PNL240012 Call For Price

2.4-2.5GHz Direction Panel Antenna - 12dBi Gain, HPBW: 70° Viewed Horizontally / 28° Viewed Vertically

PNL240018 Call For Price

2.4-2.5GHz Direction Panel Antenna - 18dBi Gain, HPBW: 75° Viewed Horizontally / 45° Viewed Vertically